

**PROTECH**  
MEDICAL

**Radiation Safety  
Apparel and Storage  
Catalog**

Made in the USA since 1994

**2026**



## OUR SERVICES

# APRON RENTALS

For those who need temporary radiation protection, Protech rental aprons offer a convenient and reliable solution. Rental aprons are ideal for continuing education courses, cadaver workshops, and any event involving fluoroscopy or radiation protective apparel. There is no need to purchase and store large quantities of inventory for short-term use. Protech maintains a large selection of in-stock rental aprons available year-round, with quantities of up to 150 aprons available with as little as 48 hours' notice.

### The Particulars

Our rental aprons are made with Prolite lead-free core material and antimicrobial Satinguard fabric. Standard rentals are available in 0.35 mm lead equivalency in the front and 0.25 mm in the back for full-protection styles. Optional 0.50 mm front protection is also available.



## AVAILABLE RENTAL STYLES

### Front Protection Aprons

The Flexback apron is our most popular rental style thanks to its comfort, lightweight design, and ease of use. We stock more than 150 Flexback aprons in a range of sizes.

Flexback sizes available:

- Small, Medium, Large, X-Large, 2XL

### Full Protection Aprons

For customers seeking maximum coverage, Protech also offers full-protection rental aprons with protection in both the front and back. Most full-protection rental aprons are available with 0.35 mm or 0.50 mm protection in the front and 0.25 mm protection in the back. Because full-protection rentals are requested less frequently, quantities are limited.

Full protection styles available:

- Balance Vest and Skirt Apron

Sizes available:

- Small, Medium, Large, X-Large

## OUR SERVICES

# REPAIRS AND ALTERATIONS

Protech specializes in the repair and alteration of radiation protection garments, drapes, curtains, and other protective apparel, including many competitor products. We are confident in the durability of our garments and their ability to meet the rigorous demands of healthcare professionals, but accidents happen and years of use can take their toll. Whether your garment needs a minor repair or more extensive restoration, our experienced repair and seamstress team is here to help.

### Common Repair Services

Protech welcomes almost any repair challenge. Some of our most common repair services include:

- Buckle or hook-and-loop replacement
- Fabric replacement
- Core material patchwork for Protech aprons only
- Binding reinforcement

### Common Alteration Requests

Need a better fit, added features, or a functional update? Some of the most common alterations we accommodate include:

- Size reductions, including side seam adjustments and length reductions
- Sleeve, wing, or suspender additions
- Embroidery additions, which may require fabric replacement
- Style conversions, such as adding drop shoulders to a vest



### Important Notes

Before sending in your garment, please contact Protech or your local representative and complete an RMA form. Protech will assign an RMA number, which should be included on the form and clearly marked on the package to help our team identify and process your request. An RMA evaluation fee applies to assess the garment. Fees vary depending on the type of piece and the complexity of the requested repair or alteration.

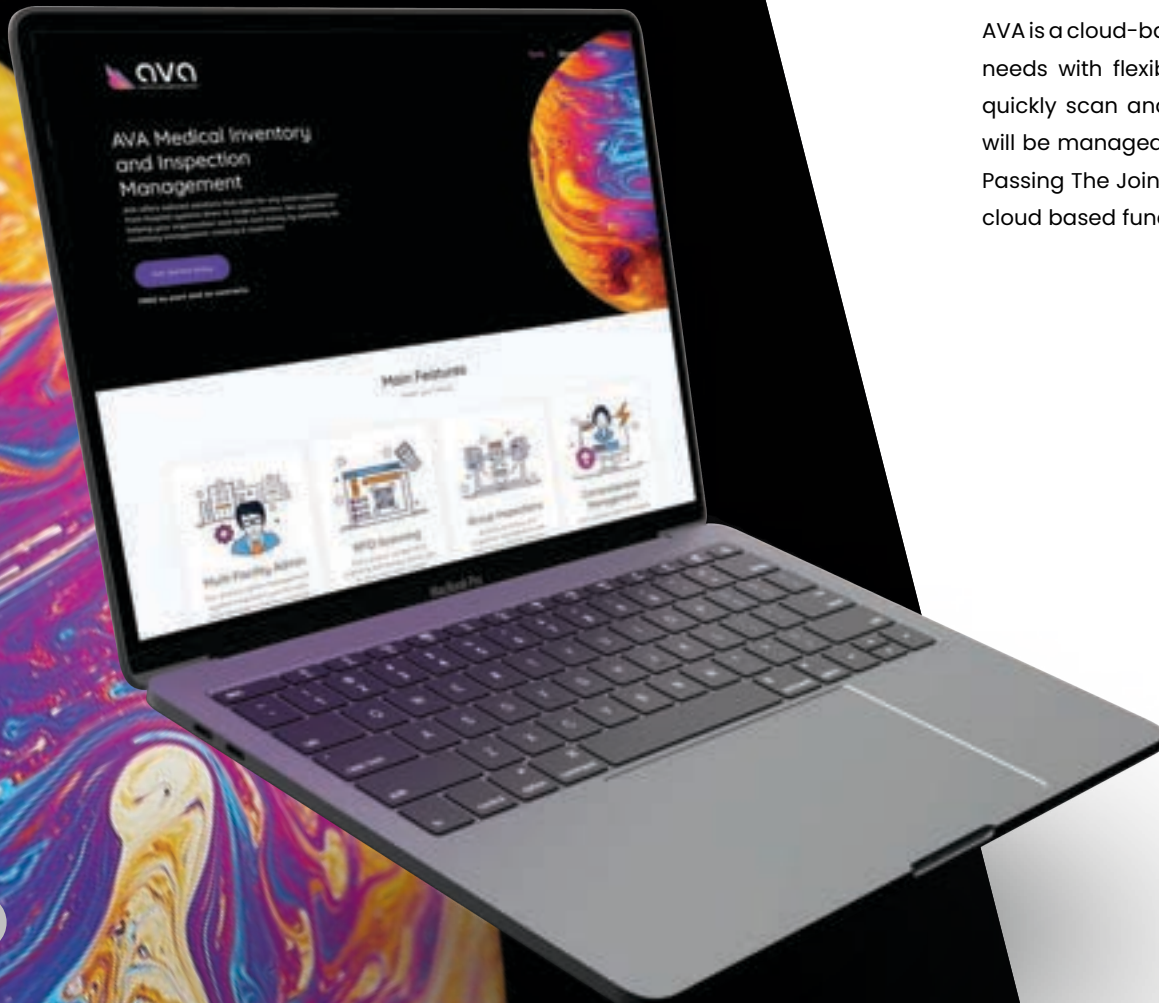
If a lead garment is determined to be unsalvageable, Protech can dispose of it for a per-piece fee and provide a letter of destruction if needed. Garments may also be returned using either your shipping label or a Protech shipping label, with applicable shipping charges.

Because we also service garments from other manufacturers, some replacement materials may not be exact matches, including fabric colors, closures, or thyroid collar attachments. Our team will always work to provide the best like-for-like option available. Please note that Protech cannot perform core material patchwork on garments from other manufacturers, as attenuation materials vary by brand



# INSPECTIONS AND INVENTORY MANAGEMENT

AVA is a cloud-based, enterprise-level software designed to scale for your organizational needs with flexibility and efficiency. AVA offers RFID capabilities that enable you to quickly scan and inspect multiple garments at the same time. Your inventory items will be managed from the minute your order is placed and throughout their life cycle. Passing The Joint Commission (TJC) inspections will no longer be a burden with AVA's cloud based functionality and easy reporting.



**Start for FREE with AVA**

**AVA BASIC is free to use!** No setup fees or contracts required. Our Basic subscription offers industry leading features; suitable for all facilities small and large.



**RFID Reader**  
(Your Magic Wand)

## The AVA Smart Tag

All garments purchased through Protech come fitted with an AVA smart tag. The AVA smart tag features both a QR code and an RFID inlay so you can easily scan your garments. Paired with a unique garment ID and hook and loop color indicators, keeping track of your garments has never been easier.

The best part? Scan all your aprons at once. On a rack or in a storage closet, our RFID reader can handle it!

## Retrofitting Your Apron

Didn't purchase your apron with Protech? Not a problem. AVA works with or without AVA's Smart Tags and can utilize old ID tags. However, retrofitting your apron with an AVA Smart Tag is easy! Simply contact us and we'll supply everything that you need.



# AVA: APRON INSPECTIONS & INVENTORY MANAGEMENT

## AVA SUBSCRIPTION OPTIONS

AVA is a cloud-based solution, meaning, as long as you have internet and a device (phone, computer, tablet etc), you have access. It also operates independently from your hospital's network, streamlining the implementation process.

### BASIC

- Record inspection results for large groups of aprons at one time.
- Manage hospital facilities, departments, and users together with 1 login.
- Keep track of all your garments (from any manufacturer) in one convenient location.
- Bulk upload tools for easy inventory migration.
- Choose between multiple user roles for managed access to the system.

### ENTERPRISE

- Everything in the Basic plan, plus...
- Bulk scan & inspect garments with RFID (even through a locker).
- Managed inventory migration from your current provider.
- Unlimited departments and users
- Additional reports for you and The Joint Commission.
- Custom Inventory Groups
- Manage cleaning records independently from your imaging records.

### COMPLETE

AVA Complete delivers a comprehensive, outsourced garment management program. From initial onboarding and tagging to annual inspections, sanitization, and audit-ready reporting, Protech ensures full lifecycle control of your radiation protection inventory. Garments requiring repair, replacement, or disposal are clearly identified and managed, driving compliance, accuracy, and operational efficiency across your facilities.

### Are you protected?

During an AVA Complete inspection, we upload an x-ray scan of your garment directly into AVA. You'll know right away if your protection is compromised or not!



# AVA: APRON INSPECTIONS & INVENTORY MANAGEMENT

## AVA SUBSCRIPTION OPTIONS

	BASIC	ENTERPRISE	COMPLETE
Annual Cost	Free	Variable	Variable
Departments & Users	✓	✓	✓
Multi-user Roles	✓	✓	✓
Inspections & Inventory Reports	✓	✓	✓
Multi-Facility Management	✓	✓	✓
RFID Group Scan Inspections	-	✓	✓
Migrations Services	-	✓	✓
Technical Support	-	✓	✓
Inspection Services	-	-	✓
Cleaning Services	-	-	✓
Item Onboarding	-	-	✓
Notification Settings	Limited	Advanced	Advanced

### Backed by industry leaders

We have 1,000's of aprons to inspect on a tight budget and with limited time. Our old inspection software simply wasn't up to task. AVA's responsive staff imported our aprons in time for inspection and have ensured a smooth transition.

--- Lahey Hospital and Medical Center

"Our existing tracking software was insufficient for our needs. AVA's time-saving features became apparent right away. Their RFID technology was great for scanning groups of aprons and the group inspections integrated perfectly into that process. We are happy with the software and look forward to AVA's many new innovations to come."

-- Northshore Medical

We decided on AVA because of its emphasis on inventory management, not just inspections. AVA's intuitive software made learning it a breeze. We were able to quickly retrofit our existing aprons and take control of our inventory challenges.

-- Huntington Hospital

We wanted a software that could help manage apron inventory and improve inspection accuracy. We felt that the free softwares and apps were inadequate. Some of them even required employees to use their own personal devices. AVA was the only true enterprise software that delivered on what we were looking for."

--- Stamford Hospital

# 01

---

Lead garments are worn by healthcare professionals to help reduce exposure to scatter radiation during procedures involving x-ray imaging and fluoroscopy. Lead aprons are often used in combination with other radiation protection products to provide more complete coverage during procedures where radiation exposure is a concern.

---





# APRONS

## Flexible, tailored aprons proudly made in the USA

Protech specializes in custom-made aprons tailored to the size, shape, and contours of each wearer for a more precise, comfortable fit. Because every body is different, our aprons are designed to conform more naturally to individual curves while delivering the coverage and wearability healthcare professionals need throughout the day. With more than 200 fabric colors available for the exterior, interior, and binding trim, each garment can also be personalized to reflect your preferences and workplace environment. Embroidery, logos, and other add-ons allow for an even more customized finish.

Handcrafted using proprietary polymer technology, Proguard Aprons are engineered to be lighter, more flexible, and more durable than many competitive alternatives.

In support of our commitment to quality, Proguard Aprons are proudly made in the USA by highly trained professionals and backed by a 2-year warranty. Protech follows ISO quality management guidelines and serves customers in markets around the world, including Latin America, Europe, and Asia.



# APRON BUYER'S GUIDE

The right radiation protection apron should support the way you work, the procedures you perform, and the level of comfort you need throughout the day. Because no two roles, body types, or preferences are exactly alike, Proguard aprons are designed to offer a high degree of customization in fit, protection, and style.

From custom sizing and fabric selections to added protection features such as sleeves or axillary wings, each garment can be configured to meet your specific needs. Many professionals also choose to personalize their apron with embroidered names, titles, or department identifiers for a more professional appearance and easier identification in busy clinical environments.

When selecting an apron, it is important to consider factors such as procedure type, procedure length, body type, range of motion, and personal comfort preferences. The right combination of style, protection, and features can make a meaningful difference in both wearability and long-term satisfaction.

1

# APRON BUYER'S GUIDE: STEP 1

## CHOOSE YOUR APRON STYLE

1



### FRONT PROTECTION APRONS

Front protection aprons provide radiation **protection in the front only** and are generally more forgiving than full protection styles. Because they contain less protective material, they tend to be **lighter, more flexible, and easier to wear for extended periods**. These aprons are an excellent choice for short to moderate procedures where the risk of lateral or rear exposure is low. If you are looking for a reliable, lightweight front protection apron, the **Flexback** is a clear customer favorite.



Wraparound

Vest/Skirt

### FULL PROTECTION APRONS

Our primary full protection styles include Wraparound aprons (one-piece) and Vest/Skirt combinations (two-piece). Because full protection aprons are designed to provide coverage in both the front and back, achieving the **proper fit is especially important** for comfort, protection, and long-term wearability. Protech offers a wide range of customizations and add-ons to help ensure the right fit for each wearer.

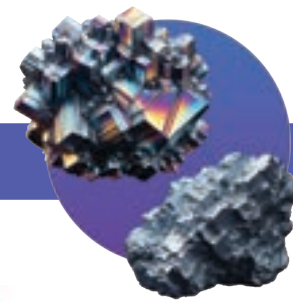
Wraparound aprons provide maximum coverage from front to back and are an **excellent choice for longer procedures with higher exposure**. Because they contain more protective material than front protection styles, they are **typically heavier**. Compared with Vest/Skirt combinations, Wraparound aprons are often easier to don, though they place more weight directly on the shoulders.

Vest/Skirt aprons are ideal for those seeking **maximum protection during prolonged procedures** where lateral or back exposure is a concern. Due to the overlapping protection between the vest and skirt, they often contain more protective material than other styles. However, they can **shift up to 50% of the weight burden away from the shoulders**, which many users find improves comfort and mobility during longer cases.

# CHOOSE YOUR CORE MATERIAL

Each Protech core material is designed to offer a different balance of weight, flexibility, and radiation attenuation, allowing customers to choose the level of protection that best fits their clinical needs. In general, **higher protection levels increase attenuation but also add weight.** A garment's protection level is typically expressed as lead equivalence (LE), and the appropriate LE should be selected based on factors such as procedure type, duration of exposure, beam intensity, and facility requirements. For shorter or lower-exposure procedures, 0.25 mm or 0.35 mm LE may be appropriate, while 0.50 mm LE is commonly recommended for longer procedures or those involving greater exposure. Before purchasing, always confirm any minimum lead equivalency requirements with your hospital, department, radiation safety officer, or applicable state or local regulations.

Protech's standard thickness options include 0.25 mm, 0.35 mm, and 0.50 mm LE, with 0.35 mm and 0.50 mm LE being the most commonly selected. Additional options, including 0.70 mm and 1.00 mm, are available upon request. **Standard protection for most lead garments is 0.50 mm LE in the front and 0.25 mm LE in the back.** For other product categories, such as dental aprons and certain accessories, standard lead equivalency levels may vary.



## CORE MATERIAL OPTIONS      CORE MATERIAL THICKNESSES



### ASTM + IEC

-   
Lead
-   
T-Lite
-   
Prolite IEC



### ASTM ONLY

-   
Prolite
-   
Premier
-   
Nano



### Lightest

Attenuates from  
86-91% @ 90kV



### Optimal

Attenuates approx.  
94% @ 90kV



### Standard

Attenuates approx.  
97% @ 90kV

# A "WEIGH BETTER ALTERNATIVE" THE LIGHTEST CORE MATERIAL. PERIOD.

Nano is the lightest material available on the market, engineered exclusively to reduce the weight of your apron and support musculoskeletal health.

Manufactured from a proprietary blend of x-ray attenuating metals, Nano delivers excellent protection across optimal kV ranges at a fraction of the weight of traditional lead aprons.

Highly Flexible

Lead-Free

Optimal kV protection

Designed for Musculoskeletal Health

Tested to ASTM 2547-18



## NANO

### NANO VERSUS LEAD

**7lbs**

Large Nano  
Frontal Apron



**10.5lbs**

Large Lead  
Frontal Apron

**12lbs**

Large Nano Vest  
and Skirt Apron



**18lbs**

Large Lead Vest  
and Skirt Apron

3

### APRON BUYER'S GUIDE: STEP 3

# CHOOSE YOUR FABRIC COLORS

3

Select the exterior, interior, and binding colors for your apron to create a look that fits your style and workplace. For an elevated finish, LuxRay color accents are also available. Whether you need an easy-to-clean performance fabric or want a design that stands out in the OR, Protech offers a wide range of fabric options to suit your needs. You can view all available [fabric colors on pages 33–41](#).

Each year, we introduce a new Special Edition fabric collection. Help us shape next year's lineup by sharing your input.



Luxray Accents



4

## APRON BUYER'S GUIDE: STEP 4 CHOOSE CUSTOMIZATIONS

4



Every clinician works differently, and your apron should reflect that. Protech's customization options are designed to enhance comfort, protection, and personal style without compromise. Features like CoolGuard back mesh help keep you cool during long procedures, while apron sleeves or axillary wings provide added protection for the radiosensitive, axilla region. To make it your own, Luxray pattern accents and custom embroidery add a distinct, professional look, resulting in an apron that performs better, feels better, and is uniquely yours.



Snap-on  
axillary wings



Snap-on  
apron sleeve



Velcro patch  
Embroidery

# TAKING CARE OF YOUR APRON

## CLEANING YOUR GARMENT

Establishing a consistent cleaning schedule is important to help reduce the risk of pathogen transmission and maintain the condition of your garment. Protech recommends cleaning your apron promptly after each use.

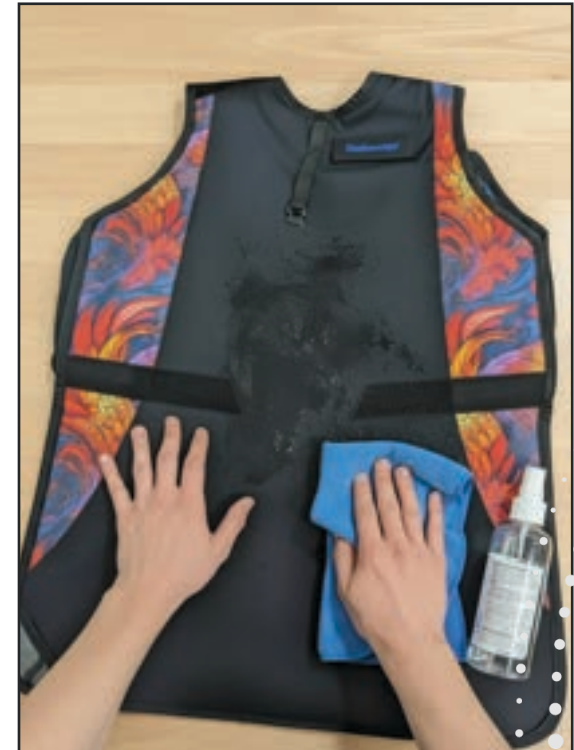
Most surface dirt and common stains, including blood, bodily fluids, and barium contrast media, can be cleaned using room-temperature water together with one of the following: mild diluted soap, alcohol-based wipes, ammonium-based wipes, or highly diluted Clorox hydrogen peroxide. Protech recommends using hydrogen peroxide sparingly, as repeated long-term use may contribute to material degradation over time.

Always apply cleaning solutions with a soft cloth or wipe, and use room-temperature water only.

Please Note: When exposure to biohazardous materials is a concern, Protech recommends using an additional protective barrier, such as an SMS gown, over the apron.

### Examples of Approved Cleaners

- Clorox Healthcare Hydrogen Peroxide Cleaner Disinfectant Wipes
- PDI Sani-Cloth® AF3 Germicidal Disposable Wipes
- PDI Super Sani-Cloth® Germicidal Disposable Wipes
- CaviCide® wipes
- Alcohol and Ammonium based cleaners are strongly recommended
- Sodium Hypochlorite (bleach) cleaners, while acceptable, result in minor degradation over time



### DO NOT

- Do not machine wash or dry your apron
- Do not use hot water
- Do not iron or autoclave



## TAKING CARE OF YOUR APRON

# APRON STORAGE & INSPECTIONS



When not in use, garments should be stored on an appropriate hanger or with Protech apron storage equipment. Recommended storage options include valet racks, Z-racks, apron hangers, and closets. If a hanger is not available, the garment should be laid flat on a clean surface. For transportation, garments should be carefully rolled rather than folded and placed in a box or Protech duffle bag.

Our full line of apron storage solutions can be found at the end of the apron section.

To help preserve the integrity of the protective core material, **do not fold aprons for extended periods**, as this can increase the risk of creasing or cracking. Garments should also be kept away from sharp objects, direct sunlight, and prolonged exposure to high heat. Recommended storage temperature is 70–80°F (21–27°C), with an approximate allowable range of 60–100°F (16–38°C).

## Annual Inspections

Annual garment inspections are an important part of many facility compliance and radiation safety programs. Because this process often falls on busy technologists and staff, it can take valuable time away from patient care and daily responsibilities. AVA helps simplify inspections and inventory management with enterprise-level technology designed to make the process faster, easier, and more efficient. For more information, please refer to pages 10–13.



# AVA

Inspections and  
Inventory Management

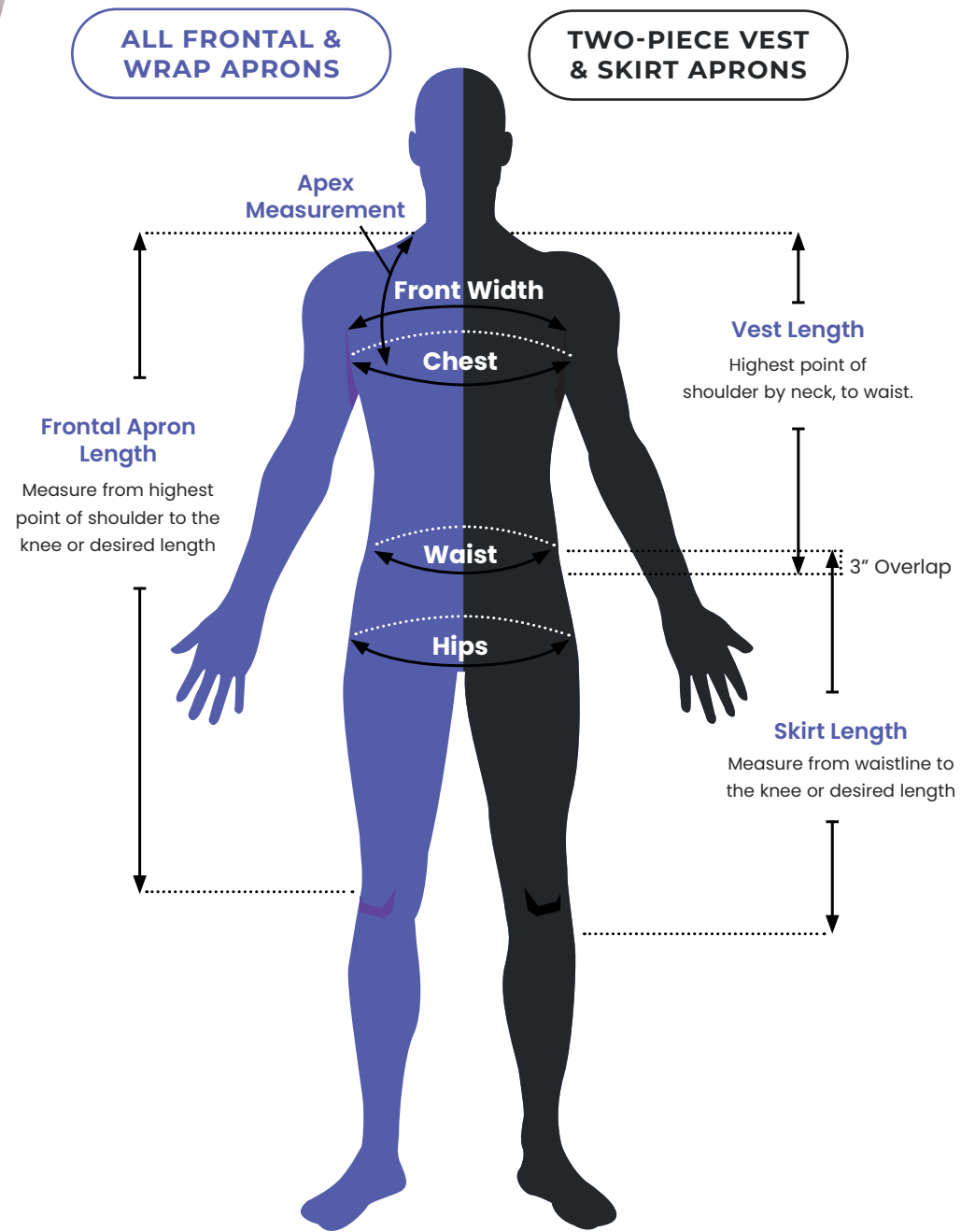
# APRON MEASUREMENTS



Having a well-fitted apron optimizes for comfort, maximizes protection, and improves longevity. An apron that's too big will leave you with gaps in protection and an apron that's too small will leave you uncomfortable and restrict movement during procedures. Protech offers standard and customized sizing options to deliver the best experience and value. When determining the best option, review our measuring instructions and size charts on the following pages.

While most people can fit into a standard size apron, many prefer a custom fit due to unique proportions or to ensure adequate coverage of radio-sensitive areas. For high-quality, tailored aprons, Protech prides itself on being the best in industry!

Nervous about getting it right? You can contact us at 561.627.9769 or [sales@protechmed.com](mailto:sales@protechmed.com) and we'll be happy to assist you. We have sales reps and local representation throughout the United States and in over 50 countries!



# MEASUREMENTS AND SIZING

## HOW TO MEASURE



### Chest Measurement

Measure around the largest circumference of the bust area, keeping the tape parallel to the floor with the client's arms at their sides. Do not measure tightly



### Waist Measurement

Measure around the smallest circumference of the torso. If you measure at waist level it may be inaccurate.



### Hip Measurement

Measure around the largest circumference of the hips and buttocks with the tape parallel to the floor: generally 8-9 inches down from the waist.



### Front Apron Length Measurement

Measure from the top of the shoulder over the bust to the desired length. Do not contour the tape measure in under the bust.



### Vest Length Measurement

Measure from the top of the shoulder over the bust to the desired length. Do not contour the tape measure under the bust.



### Skirt Length Measurement

Measure from the top of the pant line (waist) and over the outside of the hip down to the desired length.



### Apex adjustment

The Apex Adjustment is a necessary alteration to add or remove excess material near the shoulder area resulting when a customer has highly varied measurements. **Ex.** Chest measurement is Large and the Waist measurement is 3XL: the resulting apron may have excess material in the shoulder because this apron will be cut from a larger pattern which assumes the wearer is taller. An Apex Adjustment of .5 to 1 inch would need to be made in order to remove excess material and eliminate "gapping."

# MEASUREMENTS AND SIZING

## APRON SIZE CHARTS

### WOMEN

#### GENERAL APRON SIZING

	XS	Small	Med	Large	XL	2XL	3XL
<b>Height</b>	5'1"	5'2"	5'5"	5'8"	5'10"	5'11"	
<b>Chest</b>	36	38	40	43	46	49	52
<b>Waist</b>	25	27	29	32	35	40	44
<b>Hips</b>	35	37	39	42	46	48	52
<b>Frontal Length</b>	33	34	36	38.5	40.5	42.5	42.5
<b>Frontal Width</b>	18	19	20	21	23	24	26
<b>Vest Length</b>	19	22	22	22	22	23	23
<b>Skirt Length</b>	20	20	22	22.5	22.5	22.5	24
<b>WABR Length</b>	33	34	37	40.5	42.5	42.5	44.5

#### TRI-TAB APRON SIZING

	Small	Med	Large	XL	2XL
<b>Chest</b>	38	40	43	46	49
<b>Vest Length</b>	22"	22"	22.5"	23"	26"

#### General Instructions

Standard sizes shown above apply as upper limits. If your measurements fall above a size's specified limit, we recommend you size up for additional allowance, aka "wiggle room." There is NO standard size allowance added so we recommend that you incorporate an additional 1-2" of "wiggle room" for the Chest measurement.

#### Length Adjustments

Length adjustments vary depending on your height and the required length adjustment to ensure your apron reaches around your knee cap. Any additional inches (up to 6") incur extra fees.

#### GENERAL APRON SIZING

	XS	Small	Med	Large	XL	2XL	3XL
<b>Height</b>	5'2"	5'4"	5'8"	5'11"	6'2"+		
<b>Chest</b>	39	42	45	49	53	57	61
<b>Waist</b>	32	34	38	42	46	50	54
<b>Hips</b>	34	36	40	44	48	52	56
<b>Frontal Length</b>	34	34	37	40.5	42.5	42.5	45.5
<b>Frontal Width</b>	19	21	22	24	26	28	30
<b>Vest Length</b>	22	22	24	25	25	25	28
<b>Skirt Length</b>	20	20	20	21	21	22	22
<b>WABR Length</b>	36	36	38	40.5	42.5	42.5	45.5

#### TRI-TAB APRON SIZING

	Small	Med	Large	XL	2XL
<b>Chest</b>	42	45	49	53	57
<b>Vest Length</b>	25"	27"	27.5"	28.5"	28.5"

#### Custom Sizing Allowances aka "Wiggle Room"

- All Styles XS to XL, by default, will be made with a +1" allowance in the Chest + Skirt waist - aka "wiggle room."
- All Styles 2XL to 4XL, by default, will be made with a +2" allowance in the Chest + Skirt waist - aka "wiggle room."
- If you do not want "wiggle room", you must specify.

#### Quality Assurance Size Tolerances

For all apron styles, our allowed size tolerances are -0 (no underage) up to +1".

### MEN

## MEASUREMENTS AND SIZING

# ACCESSORIES AND PEDIATRIC SIZE CHARTS



### THYROID COLLAR SIZING\*

**Original & Standard Thyroid**

**Proguard Thyroid**

**SG Disposable Thyroid**

**Visor Thyroid**

**Bib & Mammography Thyroid**

	Small/Reg.	Med	Large	XL
Original & Standard Thyroid	13-14"	15-16"	17"+	Custom
Proguard Thyroid	21"	22"	23"	24"
SG Disposable Thyroid	13-16"	-	17-20"	-
Visor Thyroid	25"	-	27"	-
Bib & Mammography Thyroid	One size fits all			

\*Measurements of neck circumference



### HEAD CAP SIZING\*

**Head Cap**

**Page Cap**

**Proguard Smart Cap**

**SG Disposable Smart Cap**

	Small	Med	Large	XL
Head Cap	21"	22"	23"	24"
Page Cap	21"	22"	23"	24"
Proguard Smart Cap	21-22"		23-25"	
SG Disposable Smart Cap	21"	22"	23"	-

\*Measurements of head circumference



### KIDS APRON SIZING\*

**Dimensions**

**Ages**

	Small	Medium	Large
Dimensions	12 x 24"	14 x 26"	16 x 28"
Ages	Ages 1-3	Ages 4-6	Ages 7-10

\*Velcro adjustable & Tie Aprons

### APRON SLEEVE SIZING

**Length (Standard)**

**Length (Short)**

**Circumference (Female)**

**Circumference (Male)**

	Small	Med	Large	XL	2XL
Length (Standard)	11"	11"	11"	11"	11"
Length (Short)	8.5"	8.5"	8.5"	8.5"	8.5"
Circumference (Female)	15"	15"	16-17"	16-17"	17-18"
Circumference (Male)	15"	16-17"	18-19"	19-20"	19-20"

# HOW DOES YOUR APRON PROTECT YOU?

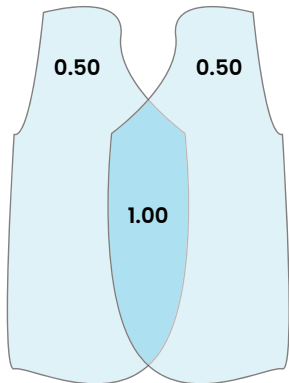
## GARMENT LEAD CONFIGURATIONS

To maximize customer choice, Protech manufactures a wide range of garments with unique, overlapping panel designs. Each style offers protection and comfort with flexibility, while optimizing for weight distribution. Review the protection configurations below to determine the style most suitable for your needs.

### Frontal Panel(s) of Garment Styles Shown in 0.50mm LE Configuration

#### Standard Overlapping Front Panels

Balance Wraparound Back Relief, Balance Vest, Balance Flexback Vest

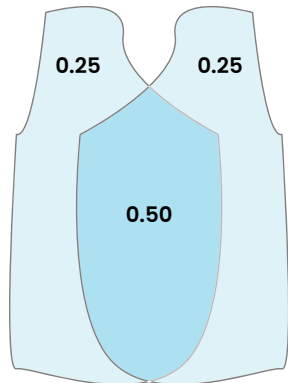


Ex) Balance Vest

These styles have the stated lead equivalence in EACH separate front panel and are designed to overlap only 2-6" at the center, using the "hook and loop" closure (lead equivalence/protection is doubled at overlap - ex 1.00mm Pb).

#### 3/4 Overlapping Front Panels

Essentials Wraparound Back Relief, Essentials Vest

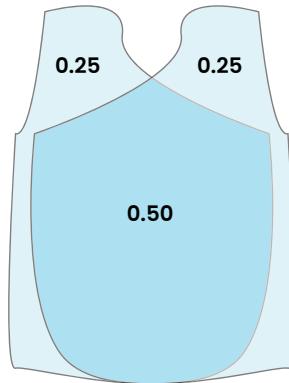


Ex) Essentials Vest

These styles have half (50%) the stated lead equivalence (mm Pb) in EACH front panel and achieve stated protection where panels overlap.

#### Full Overlapping Front Panels

Full Overlap Wraparound Back Relief, Full Overlap Vest

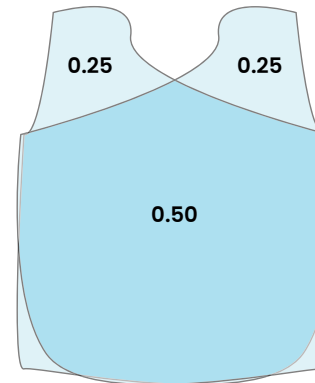


Ex) Full Overlap Vest

These styles have half (50%) the stated lead equivalence (mm Pb) in EACH front panel and achieve stated protection where panels overlap.

#### Extended Full Overlap Front Panels - IEC 60%

Full Wrap Vest

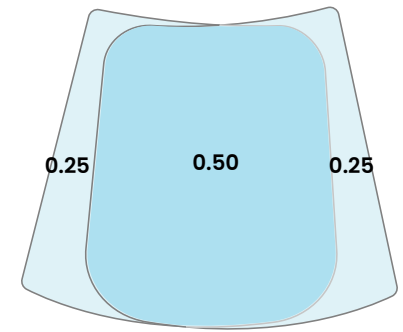


Ex) Full Wrap Vest

These styles have half (50%) the stated lead equivalence (mm Pb) in EACH front panel and achieve stated protection where panels overlap.

#### Skirt Standard Overlapping Front Panels

Standard Skirt, EZ Skirt



Ex) Standard Skirt

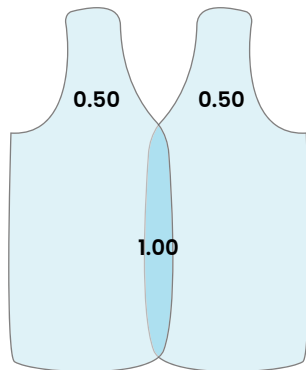
These styles have half (50%) the stated lead equivalence (mm Pb) in EACH front panel and achieve stated protection where panels overlap.

**Note:** All listed garment styles have a single back panel which comes standard with 0.25mm LE. The exceptions are noted with an asterisk (\*) and have 2 panels which overlap, but still provide 0.25mm LE protection (some areas may provide 0.50mm LE).

**Panel(s) of Garment Styles Shown  
in 0.50mm LE Configuration**

**Specialty Back Panel  
Overlapping Styles**

Tri-Tab Vest, Wraparound  
Flexback, Maternity Wraparound  
Flexback, EZ Vest

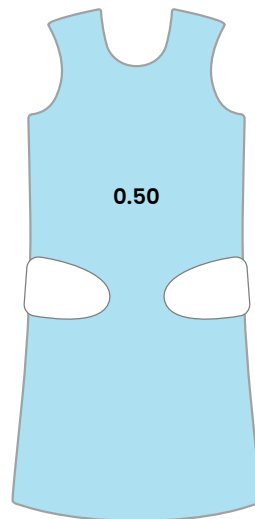


Ex) EZ Vest

These styles have the stated lead equivalence in EACH separate front panel and are designed to overlap only 2-6" at the center, using the "hook and loop" closure (lead equivalence/protection is doubled at overlap - ex 1.00mm Pb).

**Single Front  
Panel Styles**

Frontal Aprons, Wraparound  
Flexback\*, Wraparound  
Flexback Maternity Apron\*,  
Maternity Apron, Tri-tab Vest\*,  
EZ Vest\*, Versa Wrap



Ex) Flexback

**IEC 60% Front  
Protection Styles\*\***

**Full Wrap Vest, Versa Wrap,  
EZ Vest, EZ Skirt**

\*\*IEC 60% Protection means the side seams of the garment have been altered from being centered (50% front / 50% back) to being slightly off center (60% front / 40% Back). The styles listed above are designed to comply with IEC 60% Frontal Protection Requirements.



Full Wrap Vest and  
Skirt shown here



# CORE MATERIALS

Knowing what is inside your apron is just as important as understanding how it is designed to protect you. Each Proguard core material is carefully formulated to deliver more efficient attenuation across key portions of the photon spectrum while reducing gaps in protection that can result from over-reliance on any single x-ray attenuating element. Protech uses a balanced elemental approach to address k-edge performance across important diagnostic imaging ranges. Our advanced elastomer systems are also engineered to provide an excellent balance of toughness, flexibility, durability, and resistance to cracking over time.

Diagnostic imaging exposes personnel primarily to x-ray energies within the 50–150 kV range. Each metal used in a radiation protection material contributes differently across that range. Lead (Pb) has long been the industry standard because it provides strong, consistent attenuation throughout the full 50–150 kV spectrum. However, lead is also relatively heavy and presents environmental concerns.

Other non-lead metals commonly used in radiation protection include antimony, barium, cerium, tungsten, and bismuth. While these elements are often used in lighter-weight formulations, they do not always provide the same uniform attenuation across the entire 50–150 kV range when used in isolation. For example, antimony (Sb) and barium (Ba) are generally more effective below lead's k-edge region, while higher atomic number elements such as tungsten (W) and bismuth (Bi) are more effective at attenuating higher-energy radiation. Understanding the strengths and limitations of each element highlights the importance of a balanced multi-metal formulation designed to optimize protection across the diagnostic imaging spectrum.



0.25

**Lightest**

Attenuates from  
86–91% @ 90kV

0.35

**Optimal**

Attenuates approx.  
94% @ 90kV

0.50

**Standard**

Attenuates approx.  
97% @ 90kV

# CORE MATERIAL OPTIONS

## IEC AND ASTM CERTIFIED

IEC core materials are engineered with enhanced metal blends and layering configurations to meet the rigorous protection requirements of the IEC standard across specified kV ranges. Compared with ASTM-based materials, IEC core materials are typically heavier but often provide broader protection across the required energy spectrum. The IEC standard is commonly used in the European Union, the United Kingdom, Australia, and other international markets.



### STANDARD LEAD

**Weight @0.50mm:** 6900 gsm

**Key Components:** Lead and Plasticizers

**Optimal kV Range:** 50-150kV

**Certifications:** ASTM & IEC Certified

**Key Benefits:** Maximum Protection



### T-LITE

**Weight @0.50mm:** 6340 gsm - *8% lighter than lead*

**Key Components:** Lead, Antimony and Plasticizers

**Optimal kV Range:** 50-150kV

**Certifications:** ASTM & IEC Certified

**Key Benefits:** Eco-friendly, balanced weight and highly protective



### PROLITE BILAYER IEC

**Weight @0.50mm:** 6000 gsm - *13% lighter than lead*

**Key Components:** Bismuth and Plasticizers

**Optimal kV Range:** 60-150kV

**Certifications:** ASTM & IEC Certified

**Key Benefits:** Eco-friendly, balanced weight and highly protective

#### Average Apron Weights\* **Standard Lead**

**Frontal:** 8.63 lbs

**Vest and Skirt:** 14.75 lbs

**Wraparound:** 15.95 lbs

#### **T-Lite**

7.94

13.57

14.68

#### **Prolite Bilayer IEC**

7.42 lbs

12.68 lbs

13.71 lbs

\* Weights are measured using a 0.50mm LE core material thickness - medium sized apron. Protech makes every effort to accurately record its apron weights. Because each category is averaged, the numbers we provide in the weight chart are subject to a +/- 15% weight variance. Minor length or width adjustments, including heavier fabrics, are not differentiated and instead, averaged together.

# CORE MATERIAL OPTIONS

## ONLY ASTM CERTIFIED

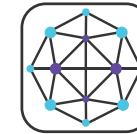
ASTM core materials are engineered to provide an effective balance of protection, weight reduction, and durability. Because ASTM requirements allow greater flexibility in kV range performance than IEC standards, they offer customers more choice in selecting the material and protection profile best suited to their clinical application. This makes ASTM materials an excellent option for a broad range of use cases, especially when comfort, mobility, and reduced weight are important considerations. The ASTM standard is widely used in the United States and globally.



### PROLITE



### PREMIER



### NANO

**Weight @0.50mm:** 5700 gsm - *19% lighter than lead*

**Key Components:** Cerium and Plasticizers

**Optimal kV Range:** 80-110kV

**Certifications:** ASTM Certified

**Key Benefits:** An affordable, lightweight, and eco-friendly option

5200 gsm - *26% lighter than lead*

Antimony and Plasticizers

70-110kV

ASTM Certified

Eco-friendly, optimal balance of weight and protection

4600 gsm - *34% lighter than lead*

Antimony and Plasticizers

80-100kV

ASTM Certified

Ultra lightweight - perfect for those with musculoskeletal issues

#### Average Apron Weights\*

**Frontal:** 7.16 lbs

**Vest and Skirt:** 12.32 lbs

**Wraparound:** 13.23 lbs

#### Premier

6.38 lbs

10.91 lbs

11.80 lbs

#### Nano

5.87 lbs

9.96 lbs

10.84 lbs

\* Weights are measured using a 0.50mm LE core material thickness - medium sized apron. Protech makes every effort to accurately record its apron weights. Because each category is averaged, the numbers we provide in the weight chart are subject to a +/- 15% weight variance. Minor length or width adjustments, including heavier fabrics, are not differentiated and instead, averaged together.

# APRON FABRIC COLORS

Protech offers a wide range of fabric colors and materials, all designed to be durable, water-resistant, and ready for the demands of any clinical setting.

For easy cleaning, Satinguard antimicrobial fabrics are a smart choice, while ripstop fabrics offer enhanced durability for high-use environments.

If staying cool is a priority, CoolGuard mesh provides built-in breathability, and for those looking to stand out, our special edition fabrics deliver a unique, Protech-exclusive look. To elevate it even further, LuxRay accents add a polished finish that brings everything together.





# PERFORMANCE FABRICS



## Satinguard Anti-microbial

A Protech team favorite, our Satinguard fabrics are velvety-soft and feature anti-microbial technology. They are also stain-resistant, easy to clean and have heavy, double-knit backing for a prolonged lifespan.

Satinguard also gives your apron that “premium look.”

## Coolguard Performance

Coolguard fabrics are uniquely designed each with special characteristics. Some are ultra-lightweight while others allow for better air flow or are bacteria-resistant.

## Wipe-away vinyls

Our vinyls are a great option for those who need an easy-to-clean apron. Because it is on the heavier side, vinyl is an excellent option for table drapes and barriers.



## SATINGUARD ANTI-MICROBIAL FABRICS\*



Matte Black  
#800



Matte Red  
#825



Matte Cyan  
#805



Matte Light Gray  
#815



Matte Dark Gray  
#813



Matte Lilac  
#817



Matte Navy  
#820



Matte Fuschia  
#810



Matte Royal  
#802

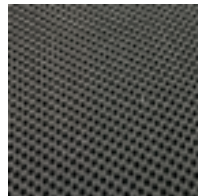


Matte Dark Teal  
#828



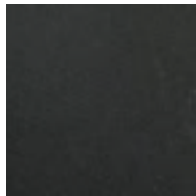
Matte Light Teal  
#830

## COOLGUARD FABRICS\*



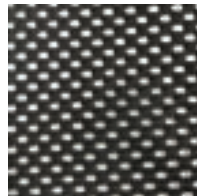
**Coolguard Air**  
#900

A cushiony mesh material that enables natural air ventilation. Interior only.



**Coolguard Spandex**  
#915

Sweat wicking, breathable microfiber with quick dry technology.



**Coolguard Mesh**  
#910

Increases air flow on back closure of apron. For frontal apron back closures only.



**"Black Silk"**  
#920

Ultra-soft & breathable polyester that is fluid proof & stain resistant.



**Indigo**  
#925

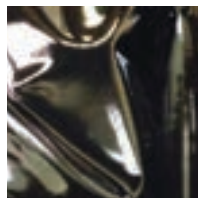
A soft, PVC nylon that is fluid-proof, stain resistant, bacteria & fungus resistant. Our lightest-weight fabric!



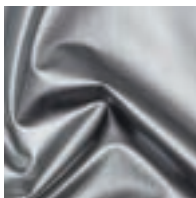
**Anti-slip fabric**  
#950

A high-quality, textured fabric placed on the inside of your apron to prevent slippage.

## WIPE-AWAY VINYLs\*



Black  
#300



Silver  
#320



Burgundy Starlight  
#305

# SPECIAL EDITION FABRICS



## Special Edition

Stand out from the rest with Protech's limited edition fabrics! Every year we introduce new designs (made in-house) to keep things fresh. They are made of durable, 300 denier nylon with a water-repellent finish.

Have a special fabric request? We'd love your feedback!

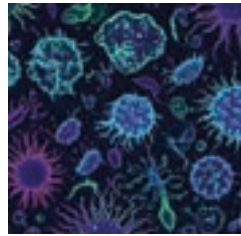


# NEW FOR 2026

SPECIAL EDITION\*



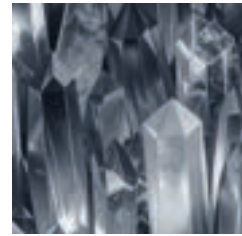
Batty  
#2135



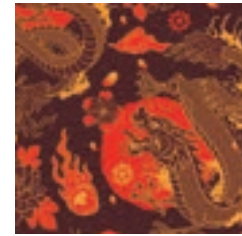
Culture Shock  
#2136



Fowl Play  
#2137



Ice Ice Baby  
#2138



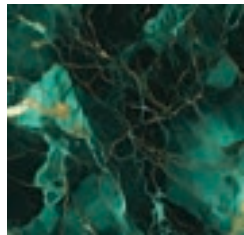
Imperial Dragon  
#2139



Inferno  
#2140



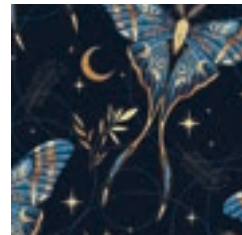
Ironclad  
#2141



Jade  
#2142



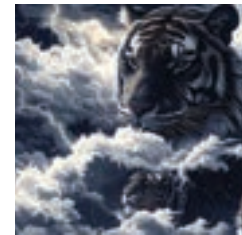
Kevin  
#2143



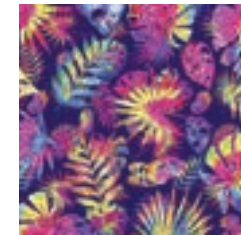
Lunar Moth  
#2144



Night Shift  
#2145



Stormborn  
#2146



Tropic Like It's Hot  
#2147

\*Upcharge applies

SPECIAL EDITION\*



PHASE OUT



Autumn Flow  
#2120



Bone-nanza  
#2121



Cardiac Couture  
#2122



Cheeky Canines  
#2123



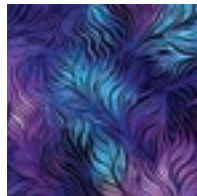
Chic Cheetah  
#2124



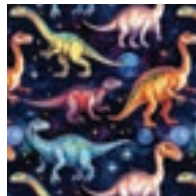
Dragon Armour  
#2125



Enchanted  
#2126



Mystic Flight  
#2127



Jurassic Galaxy  
#2128

PHASE OUT



Monster Mash  
#2129



Paw-sitive Vibes  
#2130



Phoenix Wings  
#2131



Skele-bration  
#2132

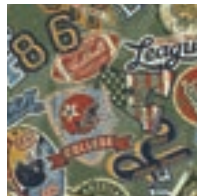


Unicorn Utopia  
#2133

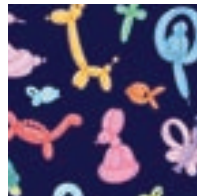


X-ray flowers  
#2134

PHASE OUT



Athletic Department  
#2101

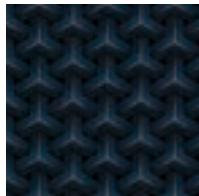


Balloon Animals  
#2102

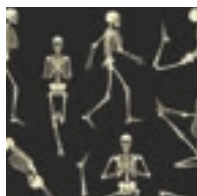


Black Camo  
#2103

PHASE OUT



Blue Steel  
#2104



Bone to be Wild  
#2105



Coral Gardens  
#2106



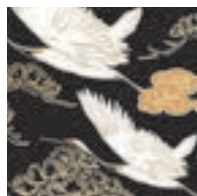
EKG  
#2107



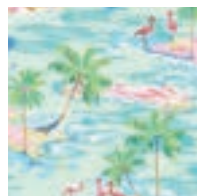
Feline Fine  
#2108



Hitting the Green  
#2110



Kyoto Cranes  
#2111



Life's a Beach  
#2112



Masked Heros  
#2113

\*Upcharge applies

SPECIAL EDITION\*



PHASE OUT

PHASE OUT

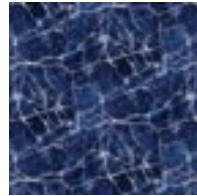
PHASE OUT



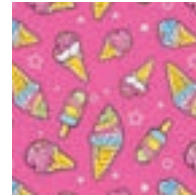
Painted Flowers  
#2114



The Hamptons  
#2115



Blue Marble  
#2010



Body Positivity  
#2015



Galactic Kitties  
#2025



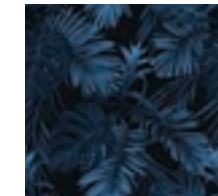
Grind my Gears  
#2035



Hex Yeah!  
#2040



Medically Necessary  
#2045

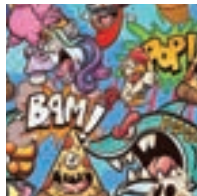


Midnight Jungle  
#2050

PHASE OUT



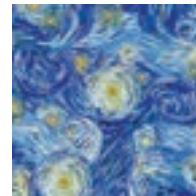
Party 'Till You're  
Dead #2070



Stable Genius  
#2080



Stardate: 2022  
#2022



Starry Night  
#2090



Supernova  
#2095



This Lead is  
Bananas #2005



Tropical Smoothie  
#2100

\*Upcharge applies



# NYLON, RIPSTOP AND CLASSIC PRINT FABRICS

## Nylons

Nylon is a lightweight and durable apron fabric option that is fluid and tear resistant. All of our nylons optimize for thickness and weight in their 210 denier design, with the exception of Neon Green, Raspberry, Yellow and Orange which are 420 denier (a little heavier and thicker!)

## Ripstop








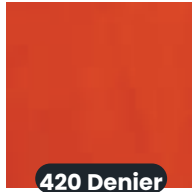

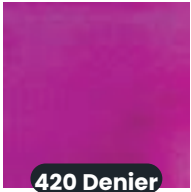


A high-quality, extremely durable apron fabric that is fluid and tear resistant. Ripstop incorporates high tensile strength interwoven fibers that are ultra resistant to tearing and look great too!

## Classic Prints


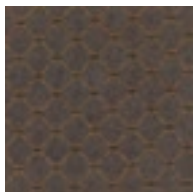
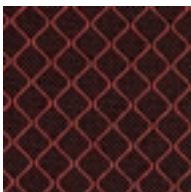


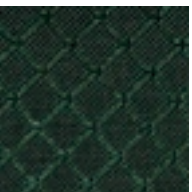
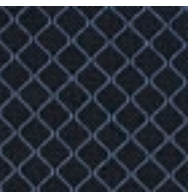
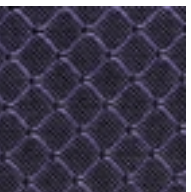

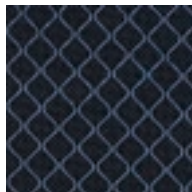
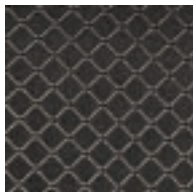
Our classic prints are made of a fluid-resistant polyester and nylon blend. They are a great option to add personality to your gear.

# NYLONS

Unless specified otherwise, nylons come standard 210 denier.

								
Black #100	Burgundy #105	Forest Green #110	Gray #115	Green #120	Hot Pink #125	Marine Blue #135	Navy #140	Neon Green #145
								
Orange #150	Purple #155	Raspberry #160	Red #165	Rose #170	Royal #175	Tan #180	Teal #185	Yellow #190

# RIPSTOP

								
Black #200	Brown #205	Burgundy #210	Chocolate #215	Forest Green #220	Green #225	Navy #230	Purple #235	Red #240
								
Royal Blue #245	Silver #250							

# CLASSIC PRINTS



Animal Farm  
#405



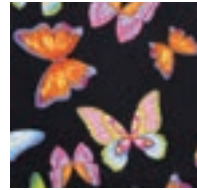
Black Lace  
#417



Blue Animal River  
#420



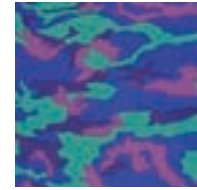
Blue Flame  
#425



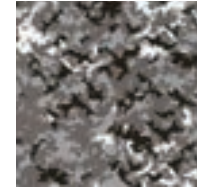
Butterfly  
#440



Camo - Backwoods  
#443



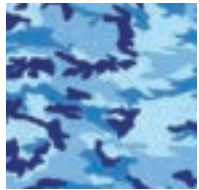
Camo - Cosmo  
#450



Camo - Digital Grey  
#455



Camo - Pink  
#465



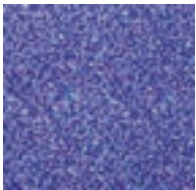
Camo - Small Blues  
#470



Camo - Small Pinks  
#475



Camo - Yellow  
#480



Chicklets Blue  
#490



Crayon Hearts  
#500

**PHASE OUT**



Divebar  
#502



Dog Paw  
#505



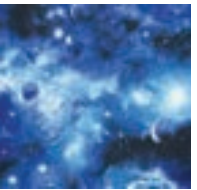
Fleur De Lis  
#512



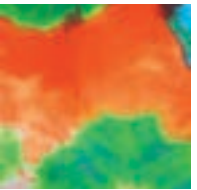
Fruity Pebbles  
#515



Galaxy - Multi  
#520



Galaxy - Royal  
#525



Green Neon Tie-Dye  
#540



Hawaiian  
#545



Hawaii Postcard  
#550



Leopard Print  
#560

**PHASE OUT**



Lu Lu Grape  
#565

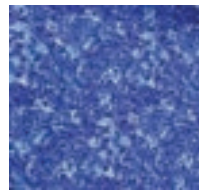


Mamba - Blue  
#575

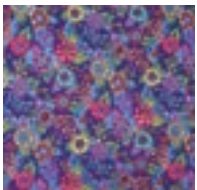


Mamba - Pink  
#580

**PHASE OUT**



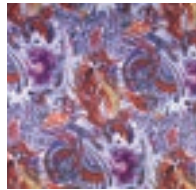
Marble Splash  
#585



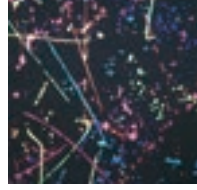
Mardi Gras  
#590



Mystery - Multi  
#595



Painted Dragon  
#600



Paint Splash  
#605

**PHASE OUT**



Paw Prints  
#610



Plaid - Green  
#620



Plaid - Light Pink  
#625

**PHASE OUT**



Plaid - Purple  
#630

## CLASSIC PRINTS

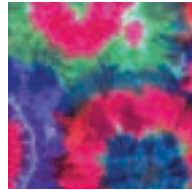
PHASE OUT



Plaid - Tan  
#635



Plaid - Teal  
#640



Purple Neon  
Tie-Dye #645

PHASE OUT



Rainbow  
#650

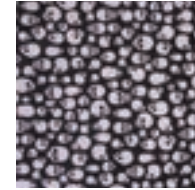


Red Dalmatian  
#655

PHASE OUT



Sheep  
#665



Skulls - Gray  
#670



Skulls - Red  
#675



Star Gazer  
#685



Stars  
#690



Steel  
#695

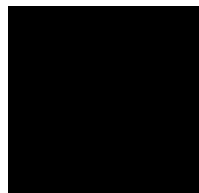


Surf Wax  
#705



Teal Splash  
#710

## BINDING COLORS



Black



Gray



Tan



Burgundy



Red



Orange



Yellow



Neon Green



Green



Forest Green



Dark Teal



Light Teal



Marine Blue



Royal



Navy Blue



Purple



Raspberry



Hot Pink



# CUSTOMIZATION OPTIONS

Our customization options are designed to elevate both performance and presence. Whether you prefer enhanced protective elements for demanding procedures or refined comfort features that move with you throughout the day, the result is protection that feels less like equipment and more like something crafted specifically for you.

Choose from a variety of fabric colors, trims and addons to create a look that reflects your personality. Add embroidered names or logos, select specialized pockets or build a uniform style across your team. However you customize it, your apron is crafted to feel personal, perform dependably, and support you.

When it comes to designing your perfect custom apron, Protech is #1.

# CUSTOMIZATION OPTIONS

## EMBROIDERY AND LOGO



Logo Embroidery

Personalize your apron with a name or logo embroidery. While we can place an embroidery just about anywhere, the most **common locations are: on pocket, just above the pocket, on your thyroid collar or a velcro patch.** A velcro patch is a convenient option for shared lead where an ID or name needs to be swapped out.

We also have a variety of stock logos to choose from. In addition to stock logos, we can accommodate large appliques or patches.



Stock Logo Examples



Script Embroidery

Aa Bb Cc Dd Ee Ff Gg  
Hh Ii Jj Kk Ll Mm Nn  
Oo Pp Qq Rr Ss Tt Uu  
Vv Ww Xx Yy Zz



Block Embroidery

Aa Bb Cc Dd Ee Ff Gg  
Hh Ii Jj Kk Ll Mm Nn  
Oo Pp Qq Rr Ss Tt Uu  
Vv Ww Xx Yy Zz

### Embroidery Details

	Apron	Accessory
<b>*Max Characters - Block</b>	24 characters per line (up to 2)	10 characters per line (1 only)
<b>*Max Characters - Script</b>	21 characters per line (up to 2)	8 characters per line (1 only)
<b>Common Locations</b>	On pocket, above pocket, velcro patch	Thyroid bib, Thyroid strap, Cap front
<b>Logo Embroidery Size Limits</b>	4" wide	1.5" wide
<b>Color Limits</b>	Up to 6 colors	Up to 6 colors
<b>Applique</b>	Varies - Contact us	Not available

\*Max characters include punctuation and spaces. Cost is per line. Digitization fee applies for all new logos.

# CUSTOMIZATION OPTIONS

## COMFORT AND DESIGN

### Luxray Accents

Have your apron tailored to perfection with LuxRay's patterned accents on the apron sides, pocket and thyroid collar. If you have a special fabric you'd like to use, we can incorporate that as well!

### Back Mesh

Allows for maximum airflow in the back panels of your frontal apron and helps keep you cool.

### Elastic Back

Provides enhanced adjustability and lumbar support by shifting apron weight from shoulders to the hips.

### Back strap

A Hook and loop backstrap keeps your apron shoulders secured and prevents slippage.

### Surgical Drop Shoulders

Specialty hook and loop tabs can be added to different apron styles allowing for easy removal of your apron to maintain sterile field.



### Extra Pockets

Need an extra pocket or two? Whether you need one on your skirt, inside your vest or even on your knees (yes, we did it), we can accommodate most requests. Shown here is a skirt pocket.



# CUSTOMIZATION OPTIONS

## ADDITIONAL PROTECTION

### Apron Sleeves

Apron sleeves wrap around your entire arm and offer comprehensive protection of vulnerable breast tissue and red bone marrow areas. Sleeves come standard in 0.25mm LE and can be sewn-in permanently or offered in our removable “Snap-on” option.

**Note:** To improve mobility, our apron sleeves are not sewn/attached at the armpit. We add a small “flap” which is tucked inside the apron armpit to ensure there are no gaps in protection.



### Side Extensions

Side Extensions can provide an additional +2 inches of protection on both sides and provide important lateral protection. Protection levels will match your apron specifications.



Snap-on  
Apron Sleeve

### Axillary Wings

Axillary wings are a protective flap sewn-in or “snapped-on” to your apron and offer vital axilla protection to vulnerable breast tissue and red bone marrow areas. Protection levels will match your apron specifications.

Snap-on  
Axillary wings



Sewn-in  
Axillary wings

# APOLLO

## QUICKSHIP GARMENTS

Apollo Quickship aprons combine premium Protech quality, rapid availability, and economy-minded value in one practical solution. **Ready to ship within 24–48 hours**, these in-stock garments are ideal for facilities that need dependable radiation protection quickly while staying within budget.

Each Apollo apron includes a thyroid collar and is manufactured with easy-to-clean, antimicrobial Satinguard fabric. Apollo garments are available in standard sizing only and do not include custom fabric selections, though a hook-and-loop patch is available for personalization. All Apollo aprons are backed by a 1-year warranty.



Style Name	Model	Protection Options	Sizes
Apollo Flexback	APO-FB	T-Lite (0.50mm), Prolite Lead Free (0.50mm), Nano (0.50mm)	SM, MD, LG, XL, 2XL
Apollo Vest and Skirt	APO-VSO	T-Lite (0.50mm), Prolite Lead Free (0.50mm), Nano (0.50mm)	SM, MD, LG, XL
Apollo Bib Thyroid Collar (velcro)	APO-TCB	Prolite Lead Free (0.50mm)	One Size
Apollo Pediatric Velcro Adjustable	APO-TA-CH	Standard Lead (0.50mm)	Child Medium
Apollo Dental Apron	APO-DA	Prolite Lead Free (0.30mm), Standard Lead (0.30mm)	Adult, Child
Apollo Gonad Shield Set	APO-GONSET	Standard Lead (0.50mm)	Set of SM, MD, LG
Apollo Half Apron	APO-HA	Standard Lead (0.50mm)	SM, MD, LG, XL
Apollo Positioning Mitt	APO-PMITT	Standard Lead (0.50mm)	One Size
Apollo Smart Cap	APO-PGCAP	Prolite Lead Free (0.50mm)	SM-MD, LG-XL
Apollo Apron Duffle Bag	APO-DUFFLE	N/A	N/A



### Ready to Ship in 24 hours

Skip the lead times! Your Apollo apron will be ready to ship in as little as 24 hours.



### Antimicrobial Fabrics

Apollo garments are made from our smooth, easy-to-clean, antimicrobial Satinguard fabric.



### Thyroid Collar Included

A one-size-fits-all thyroid collar comes with your Apollo apron.



### Color-coded by Size

Staff can easily identify their size apron in a sea of garments.



### Velcro patch Name Tag

Want to personalize your apron? Get up to 2 lines of embroidery on a shoulder velcro patch.



### Lead + Lead Free Options

Whether you need Light Lead or Lead Free core material, we've got you covered.



### No Order Forms Required

No complicated paperwork here. Just more free time.



### Male + Female Sizing in Vest and Skirt

Gendered patterns allow proper fit and protection in the chest and axilla regions.



# FRONT PROTECTION APRONS

Front protection aprons are among our most popular styles thanks to their lightweight construction, flexibility, and everyday comfort. Designed with protection in the front only, they offer a lighter, more forgiving fit than full protection aprons and are often preferred by professionals who value mobility and reduced weight.

Available in a range of styles, front protection aprons can be tailored to different procedures and comfort preferences, including options with elastic closures and back relief belts. They are especially well suited for short to moderate procedures where the risk of lateral or back exposure is low. For customers seeking a dependable, lightweight option, the Flexback is a longstanding favorite.

# FLEXBACK APRON

**MODEL:** [AP-FB]

Representing the gold standard of quality, the Flexback apron design provides enhanced back relief, comfort, and excellent weight distribution. Criss-cross back straps are specially designed with elastic to “flex” the apron’s weight burden off your shoulders to your hips, thereby providing support to your lower back. A hook and loop backstrap (shown below) is included and secures the apron around your shoulder area to prevent sliding.



## APRON FEATURES

### Front Protection Apron

#### Backstrap

Hook and loop backstrap securely fastens shoulder area.

#### Elastic Back

Provides enhanced adjustability and lumbar support. Shifts weight from the shoulders to the hips.

#### Shoulder Padding

Premium foam padding in the shoulders provides extra comfort.

#### Apron Pocket

#### Hook and loop Closure

#### Additional Customization Options

- Sewn-in Thyroid
- Embroidery
- Logo
- Extra Pocket
- Back Mesh
- Apron Sleeve
- Axillary Wings
- Drop Shoulders

### Core Material Weight (0.50mm) Thickness Options

Core Material	Weight (0.50mm)	Thickness Options
Lead	6900 gsm	0.25, 0.50mm
T-Lite	6340 gsm	0.25, 0.35, 0.50mm
Prolite IEC	6000 gsm	0.25, 0.35, 0.50mm
Prolite	5700 gsm	0.25, 0.35, 0.50mm
Premier	5200 gsm	0.25, 0.35, 0.50mm
Nano	4600 gsm	0.35, 0.50mm



For color options, see pages 34-43. Sizing info on pages 24-27.



\*CE applies to Lead, T-Lite and Prolite IEC from 0.25mm to 1.00mm.

# BACK RELIEF APRON

**MODEL:** [AP-BR]

Save yourself from back pain with Protech's Back Relief apron. This apron features a unique padded belt system constructed with a bonded elasticized panel that will not lose its shape. When engaged, the special back relief belt provides lumbar support while transferring the weight of the apron from your shoulders to your hips for increased comfort and back support throughout the life of the apron. A hook and loop backstrap is also included to secure the apron around your shoulder area and prevent sliding.



## APRON FEATURES

### Front Protection Apron

#### Backstrap

Hook and loop backstrap securely fastens shoulder area.

#### Back Relief Belt

Wide, elastic belt provides lumbar support and maximum comfort.

#### Shoulder Padding

Premium foam padding in the shoulders provides extra comfort.

#### Apron Pocket

#### Belt Buckle Closure

#### Additional Customization Options

- Sewn-in Thyroid
- Embroidery
- Logo
- Extra Pocket
- Back Mesh
- Apron Sleeve
- Axillary Wings
- Drop Shoulders

Core Material	Weight (0.50mm)	Thickness Options
Lead	6900 gsm	0.25, 0.50mm
T-Lite	6340 gsm	0.25, 0.35, 0.50mm
Prolite IEC	6000 gsm	0.25, 0.35, 0.50mm
Prolite	5700 gsm	0.25, 0.35, 0.50mm
Premier	5200 gsm	0.25, 0.35, 0.50mm
Nano	4600 gsm	0.35, 0.50mm



For color options, see pages 34-43. Sizing info on pages 24-27.



\*CE applies to Lead, T-lite and Prolite IEC from 0.25mm to 1.00mm.

# VELCRO ADJUSTABLE APRON

**MODEL:** [AP-VA]

Do you need comfort and adjustability at an affordable price? The Velcro adjustable apron has crisscrossing back straps that provide back support while securing the apron around your waist. Wide back straps prevent the apron from slipping around your shoulder and back area. Pediatric sizing available, see the end of the apron section.



## APRON FEATURES

### Front Protection Apron

#### Wide Body Back Panels

The comfortable panels secure your apron and provides lumbar support.

#### Shoulder Padding

Premium foam padding in the shoulders provides extra comfort.

#### Apron Pocket

#### Hook and loop Closure

#### Additional Customization Options

- Sewn-in Thyroid
- Embroidery
- Logo
- Extra Pocket
- Back Mesh
- Backstrap
- Apron Sleeve
- Axillary Wings
- Drop Shoulders

### Core Material      Weight (0.50mm)      Thickness Options

Pb	Lead	6900 gsm	0.25, 0.50mm
Pb	T-Lite	6340 gsm	0.25, 0.35, 0.50mm
Pb	Prolite IEC	6000 gsm	0.25, 0.35, 0.50mm
Pb	Prolite	5700 gsm	0.25, 0.35, 0.50mm
Pb	Premier	5200 gsm	0.25, 0.35, 0.50mm
Pb	Nano	4600 gsm	0.35, 0.50mm



For color options, see pages 34-43. Sizing info on pages 24-27.



\*CE applies to Lead, T-lite and Prolite IEC from 0.25mm to 1.00mm.

# SURGICAL DROP APRON

**MODEL:** [AP-SD]

Maintain your sterile field with the quick release Surgical Drop Apron. Easy-release hook and loop closures allow the surgical drop to fall even when underneath your scrubs. With padded shoulders and a criss-cross back strap design the surgical drop apron provides maximum comfort for all users. Hanging straps are included to allow for easy storage on any Protech apron rack.



## APRON FEATURES

### Front Protection Apron

#### Hanging Straps

Hanging straps on the shoulders allow for easy storage on any Protech apron rack.

#### Surgical Drop

Quick release velcro closure tabs help maintain sterile field.

#### Shoulder Padding

Premium foam padding in the shoulders provides extra comfort.

#### Apron Pocket

#### Hook and loop Closure

#### Additional Customization Options

- Sewn-in Thyroid
- Embroidery
- Logo
- Extra Pocket

Core Material	Weight (0.50mm)	Thickness Options
Lead	6900 gsm	0.25, 0.50mm
T-Lite	6340 gsm	0.25, 0.35, 0.50mm
Prolite IEC	6000 gsm	0.25, 0.35, 0.50mm
Prolite	5700 gsm	0.25, 0.35, 0.50mm
Premier	5200 gsm	0.25, 0.35, 0.50mm
Nano	4600 gsm	0.35, 0.50mm



For color options, see pages 34-43. Sizing info on pages 24-27.



\*CE applies to Lead, T-lite and Prolite IEC from 0.25mm to 1.00mm.

# BUCKLE APRON

MODEL: [AP-BA]

The Buckle Apron comes standard with an easy-release buckle allowing for quick removal of the apron. The belt is adjustable to accommodate different sizes. Criss-cross back straps provide a secure, comfortable fit.



## APRON FEATURES

### Front Protection Apron

#### Wide Body Back Panels

The comfortable panels secure your apron and provides lumbar support.

#### Shoulder Padding






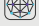
Premium foam padding in the shoulders provides extra comfort.

#### Apron Pocket

#### Durable Buckle Closure

#### Additional Customization Options

- Sewn-in Thyroid
- Embroidery
- Logo
- Extra Pocket
- Elastic Back
- Back Strap
- Apron Sleeve
- Axillary Wings
- Drop Shoulders

Core Material	Weight (0.50mm)	Thickness Options
 Lead	6900 gsm	0.25, 0.50mm
 T-Lite	6340 gsm	0.25, 0.35, 0.50mm
 Prolite IEC	6000 gsm	0.25, 0.35, 0.50mm
 Prolite	5700 gsm	0.25, 0.35, 0.50mm
 Premier	5200 gsm	0.25, 0.35, 0.50mm
 Nano	4600 gsm	0.35, 0.50mm



For color options, see pages 34-43. Sizing info on pages 24-27.



\*CE applies to Lead, T-lite and Prolite IEC from 0.25mm to 1.00mm.

# TIE APRON

**MODEL:** [AP-TA]

The Tie Apron is an easy-to-use, affordable option for x-ray protection. Utilizing a tie closure, the Tie Apron's criss crossing straps ensure a secure and comfortable fit. See Pediatric options at the end of this section.



## APRON FEATURES

### Front Protection Apron

#### Shoulder Padding







Premium foam padding in the shoulders provides extra comfort.

#### Apron Pocket

#### Tie Closure

#### Additional Customization Options

- Sewn-in Thyroid
- Embroidery
- Logo
- Extra Pocket
- Backstrap
- Apron Sleeve
- Axillary Wings

Core Material	Weight (0.50mm)	Thickness Options
 Lead	6900 gsm	0.25, 0.50mm
 T-Lite	6340 gsm	0.25, 0.35, 0.50mm
 Prolite IEC	6000 gsm	0.25, 0.35, 0.50mm
 Prolite	5700 gsm	0.25, 0.35, 0.50mm
 Premier	5200 gsm	0.25, 0.35, 0.50mm
 Nano	4600 gsm	0.35, 0.50mm



For color options, see pages 34-43. Sizing info on pages 24-27.



\*CE applies to Lead, T-lite and Prolite IEC from 0.25mm to 1.00mm.

# UROLOGY APRON

**MODEL:** [AP-UA]

If you sit while performing procedures requiring x-ray, you may be unnecessarily exposing yourself to radiation. The Urology Apron features a three panel system at the bottom of the apron which enables the user to sit comfortably while maintaining maximum coverage from x-ray.



## APRON FEATURES

### Front Protection Apron

#### Multi-Panel Design

Allows for easy maneuvering and a comfortable fit.

#### Backstrap

Hook and loop backstrap securely fastens shoulder area.

#### Shoulder Padding

Premium foam padding in the shoulders provides extra comfort.

#### Apron Pocket

#### Hook and loop Closure

#### Additional Customization Options

- Sewn-in Thyroid
- Embroidery
- Logo
- Extra Pocket
- Back Mesh
- Apron Sleeve
- Axillary Wings
- Drop Shoulders

### Core Material      Weight (0.50mm)      Thickness Options

Pb	Lead	6900 gsm	0.25, 0.50mm
Pb	T-Lite	6340 gsm	0.25, 0.35, 0.50mm
Pb	Prolite IEC	6000 gsm	0.25, 0.35, 0.50mm
Pb	Prolite	5700 gsm	0.25, 0.35, 0.50mm
Pb	Premier	5200 gsm	0.25, 0.35, 0.50mm
Pb	Nano	4600 gsm	0.35, 0.50mm



For color options, see pages 34-43. Sizing info on pages 24-27.



\*CE applies to Lead, T-lite and Prolite IEC from 0.25mm to 1.00mm.



# FULL PROTECTION APRONS

Full protection aprons are designed to provide more comprehensive coverage through front, side, and back protection. They are especially well suited for prolonged procedures or for environments where lateral and back exposure may be a concern. Because they incorporate more protective material, these styles are generally heavier than front protection aprons and benefit from a more precise fit to maximize comfort, protection, and long-term wearability.

Protech offers a diverse range of full protection apron styles, each with distinct ergonomic and weight-optimization features. Combined with our extensive customization options and add-ons, these styles can be tailored to help create the ideal balance of protection, comfort, and durability.

# TRI-TAB VEST AND SKIRT APRON



**MODEL:** [AP-TVEST](vest only) [AP-SKIRT](skirt only)

The popular Tri-tab Vest features a single front panel design which eliminates excess overlap and reduces weight by up to 10% compared to traditional vest styles. With an easy-on, easy-off multi tab (hook and loop) closure design (located on the left shoulder and around the hips), the Tri-tab provides a more ergonomic and forgiving fit. Elastic back enhancements permit a flexible and secure closure while also providing lumbar support and premium comfort. IMPORTANT: For the most accurate fit, please use the "Tri-tab Vest" measurements to determine your proper size.



## APRON FEATURES

### Full Protection Apron

#### Elastic Back

Provides enhanced adjustability and lumbar support. Shifts weight from the shoulders to the hips.

#### Single Front Panel

Eliminates excess overlapping panels achieving a 10% weight reduction (compared to VS model).

#### Tri-tab Closure Design

Ensures a proper fit.

#### Shoulder Padding

Premium foam padding in the shoulders provides extra comfort.

#### Non-slip Backing

(On skirt interior) Reduces slippage and improves fit.

#### Apron Pocket

#### Multi-tab Hook and loop Closure

#### Hanging Tabs on Skirt

#### Additional Customization Options

- Sewn-in Thyroid
- Embroidery
- Logo
- Extra Pocket
- Suspenders (skirt)

### Core Material Weight (0.50mm) Thickness Options

Core Material	Weight (0.50mm)	Thickness Options
Lead	6900 gsm	0.25, 0.50mm
T-Lite	6340 gsm	0.25, 0.35, 0.50mm
Prolite IEC	6000 gsm	0.25, 0.35, 0.50mm
Prolite	5700 gsm	0.25, 0.35, 0.50mm
Premier	5200 gsm	0.25, 0.35, 0.50mm
Nano	4600 gsm	0.35, 0.50mm

For more information on how this apron protects you (lead configuration), see pages 30-31.



For color options, see pages 34-43. Sizing info on pages 24-27.



\*CE applies to Lead, T-lite and Prolite IEC from 0.25mm to 1.00mm.

# ESSENTIAL™ VEST AND SKIRT APRON

**MODEL:** [AP-VQ](vest only) [AP-SKIRT](skirt only)

The Essential Vest features two, extended overlapping panels which achieve a 3/4 overlap when engaged. While the 3/4 overlapping panels are longer than the standard overlap vest panels, Essential Vests technically provide less protection due to the reduced protective material inside each panel. Thus, your desired front lead equivalence will only be achieved where the panels overlap. Essential vests are not an optimal choice if you are looking for maximum radiation protection and coverage, but they do provide aid to those who are more sensitive to weight and in need of reduced weight options.

See pages 28-29 for more information on how this apron protects you (lead configuration).



## APRON FEATURES

### Full Protection Apron

#### Adjustable Buckle Set

Adjustable buckle closures ensure a secure fit.

#### Extended Front Panels

Front panels are extended to 3/4 overlap coverage and when overlapped, achieve the desired LE protection.

#### Shoulder Padding

Premium foam padding in the shoulders provides extra comfort.

#### Non-slip Backing

(On skirt interior) Reduces slippage and improves fit.

#### Apron Pocket

#### Hook and loop Closure

#### Hanging Tabs on Skirt

#### Additional Customization Options

- Embroidery
- Logo
- Extra Pocket
- Apron Sleeve
- Axillary Wings
- Suspenders (skirt)

### Core Material Weight (0.50mm) Thickness Options

Core Material	Weight (0.50mm)	Thickness Options
Lead	6900 gsm	0.25, 0.50mm
T-Lite	6340 gsm	0.25, 0.35, 0.50mm
Prolite IEC	6000 gsm	0.25, 0.35, 0.50mm
Prolite	5700 gsm	0.25, 0.35, 0.50mm
Premier	5200 gsm	0.25, 0.35, 0.50mm

For more information on how this apron protects you (lead configuration), see pages 30-31.



For color options, see pages 34-43. Sizing info on pages 24-27.



\*CE applies to Lead, T-lite and Prolite IEC from 0.25mm to 1.00mm.

# BALANCE™ VEST AND SKIRT APRON



**MODEL:** [AP-V](vest only) [AP-SKIRT](skirt only)

The Balance Vest standard overlapping panel design makes it easy to don and maintain. Your desired lead equivalence is applied to both panels which doubles the protection where they overlap and ensures no gaps in protection are present during community use. The versatile Balance Vest is made with high quality buckle and hook and loop closures providing a secure and comfortable fit. The two-piece nature of the Vest and Skirt combination shifts weight to your hips and reduces back fatigue when compared to a full coat/wrap-around style apron.

See pages 28-29 for more information on how this apron protects you (lead configuration).



## APRON FEATURES

### Full Protection Apron

#### Adjustable Buckle Set

Adjustable buckle closures ensure a secure fit.

#### Standard Overlap Panels

Front panels are shorter, but the LE protection is doubled where overlapped.

#### Shoulder Padding

Premium foam padding in the shoulders provides extra comfort.

#### Non-slip Backing

(On skirt interior) Reduces slippage and improves fit.

#### Apron Pocket

#### Hook and loop Closure

#### Hanging Tabs on Skirt

#### Additional Customization Options

- Embroidery
- Logo
- Extra Pocket
- Apron Sleeve
- Axillary Wings
- Suspenders (skirt)

### Core Material Weight (0.50mm) Thickness Options

Core Material	Weight (0.50mm)	Thickness Options
Lead	6900 gsm	0.25, 0.50mm
T-Lite	6340 gsm	0.25, 0.35, 0.50mm
Prolite IEC	6000 gsm	0.25, 0.35, 0.50mm
Prolite	5700 gsm	0.25, 0.35, 0.50mm
Premier	5200 gsm	0.25, 0.35, 0.50mm
Nano	4600 gsm	0.35, 0.50mm

For more information on how this apron protects you (lead configuration), see pages 30-31.



For color options, see pages 34-43. Sizing info on pages 24-27.



\*CE applies to Lead, T-lite and Prolite IEC from 0.25mm to 1.00mm.

# ESSENTIAL™ FLEXBACK VEST AND SKIRT APRON



**MODEL:** [AP-VFBQ](vest only) [AP-SKIRT](skirt only)

The Essential Flexback Vest features a premium lumbar support belt system and two, extended overlapping panels which achieve a 3/4 overlap when engaged. While the 3/4 overlapping panels are longer than the standard overlap vest panels, Essential Vests technically provide less protection due to the reduced protective material inside each panel. Thus, your desired front lead equivalence will only be achieved where the panels overlap. Essential vests are not an optimal choice if you are looking for maximum radiation protection and coverage, but they do provide aid to those who are more sensitive to weight and in need of reduced weight options. **Note: Available in Standard sizes only. See pages 28-29 for more information on how this apron protects you (lead configuration).**



## APRON FEATURES

### Full Protection Apron

#### Adjustable Buckle Set

Adjustable buckle closures ensure a secure fit.

#### Extended Front Panels

Front panels are extended to 3/4 overlap coverage and when overlapped, achieve the desired LE protection.

#### Flexback Belt

Wraps internally around your back and securely fastens in the front.

#### Shoulder Padding

Premium foam padding in the shoulders provides extra comfort.

#### Non-slip Backing

(On skirt interior) Reduces slippage and improves fit.

#### Apron Pocket

#### Hook and loop Closure

#### Hanging Tabs on Skirt

#### Additional Customization Options

- Embroidery
- Logo
- Extra Pocket
- Apron Sleeve
- Axillary Wings
- Suspenders (skirt)

### Core Material Weight (0.50mm) Thickness Options

Core Material	Weight (0.50mm)	Thickness Options
Pb Lead	6900 gsm	0.25, 0.50mm
T-Lite	6340 gsm	0.25, 0.35, 0.50mm
Prolite IEC	6000 gsm	0.25, 0.35, 0.50mm
Prolite	5700 gsm	0.25, 0.35, 0.50mm
Premier	5200 gsm	0.25, 0.35, 0.50mm

For more information on how this apron protects you (lead configuration), see pages 30-31.



For color options, see pages 34-43. Sizing info on pages 24-27.



\*CE applies to Lead, T-lite and Prolite IEC from 0.25mm to 1.00mm.

# BALANCE™ FLEXBACK VEST AND SKIRT APRON



**MODEL:** [AP-VFB]<sub>(vest only)</sub> [AP-SKIRT]<sub>(skirt only)</sub>

The Balance Flexback Vest standard overlapping panel design makes it easy to don with its premium lumbar support belt system. Your desired lead equivalence is applied to both panels which doubles the protection where they overlap and ensures no gaps in protection are present during community use. The versatile Balance Vest is made with high quality buckle and hook and loop closures providing a secure and comfortable fit. The two-piece nature of the Vest and Skirt combination shifts weight to your hips and reduces back fatigue when compared to a full coat/wrap-around style apron. See pages 28-29 for more information on how this apron protects you (lead configuration).



## APRON FEATURES

### Full Protection Apron

#### Adjustable Buckle Set

Adjustable buckle closures ensure a secure fit.

#### Standard Overlap Panels

Front panels are shorter, but the LE protection is doubled where overlapped.

#### Flexback Belt

Wraps internally around your back and securely fastens in the front.

#### Shoulder Padding

Premium foam padding in the shoulders provides extra comfort.

#### Non-slip Backing

(On skirt interior) Reduces slippage and improves fit.

#### Apron Pocket

#### Hook and loop Closure

#### Hanging Tabs on Skirt

#### Additional Customization Options

- Embroidery
- Logo
- Extra Pocket
- Apron Sleeve
- Axillary Wings
- Suspenders (skirt)

### Core Material Weight (0.50mm) Thickness Options

Core Material	Weight (0.50mm)	Thickness Options
Lead	6900 gsm	0.25, 0.50mm
T-Lite	6340 gsm	0.25, 0.35, 0.50mm
Prolite IEC	6000 gsm	0.25, 0.35, 0.50mm
Prolite	5700 gsm	0.25, 0.35, 0.50mm
Premier	5200 gsm	0.25, 0.35, 0.50mm
Nano	4600 gsm	0.35, 0.50mm

For more information on how this apron protects you (lead configuration), see pages 30-31.



For color options, see pages 34-43. Sizing info on pages 24-27.



\*CE applies to Lead, T-lite and Prolite IEC from 0.25mm to 1.00mm.

# FULL OVERLAP VEST AND SKIRT APRON

**MODEL:** [AP-VFO]<sub>(vest only)</sub> [AP-SKIRT]<sub>(skirt only)</sub>

The Full Overlap Vest features two, fully extended overlapping panels which achieve near seam-to-seam coverage; your desired lead equivalence is achieved where each panel overlaps the other with a minor 1 – 2 inch gap near the side seams. While not as easy to don, the Full Overlap Vest provides visual clarity that you have near complete frontal coverage. Elimination of excess overlap results in a roughly 10% reduction in weight as compared to the standard overlap design. The versatile Full Overlap Vest is made with high quality buckle and hook and loop closures providing a secure and comfortable fit. The two-piece nature of the Vest and Skirt combination shifts weight to your hips and reduces back fatigue when compared to a full coat/wrap-around style apron. **See pages 28–29 for more information on how this apron protects you (lead configuration).**



Shown with extra skirt pocket

## APRON FEATURES

### Full Protection Apron

#### Adjustable Buckle Set

Adjustable buckle closures ensure a secure fit.

#### Extended Front Panels

Front panels are extended for almost seam-to-seam coverage

#### Shoulder Padding

Premium foam padding in the shoulders provides extra comfort.

#### Non-slip Backing

(On skirt interior) Reduces slippage and improves fit.

#### Apron Pocket

#### Hook and loop Closure

#### Hanging Tabs on Skirt

#### Additional Customization Options

- Embroidery
- Logo
- Extra Pocket
- Back Mesh
- Apron Sleeve
- Axillary Wings
- Drop Shoulders

### Core Material Weight (0.50mm) Thickness Options

Core Material	Weight (0.50mm)	Thickness Options
Lead	6900 gsm	0.25, 0.50mm
T-Lite	6340 gsm	0.25, 0.35, 0.50mm
Prolite IEC	6000 gsm	0.25, 0.35, 0.50mm
Prolite	5700 gsm	0.25, 0.35, 0.50mm
Premier	5200 gsm	0.25, 0.35, 0.50mm
Nano	4600 gsm	0.35, 0.50mm

For more information on how this apron protects you (lead configuration), see pages 30–31.



For color options, see pages 34–43. Sizing info on pages 24–27.



\*CE applies to Lead, T-lite and Prolite IEC from 0.25mm to 1.00mm.

# ESSENTIAL™ WRAPAROUND BACK RELIEF APRON



MODEL: [AP-WAQ]

The Essential Wraparound Back Relief Apron (aka “Wrap” or “Coat”) features a premium lumbar support belt system and two, extended overlapping panels which achieve a 3/4 overlap when engaged. While the ¾ overlapping panels are longer than the standard overlap panels, Essential Wraps technically provide less protection due to the reduced protective material inside each panel. Thus, your desired front lead equivalence will only be achieved where the panels overlap. Essential Wraps are not an optimal choice if you are looking for maximum radiation protection and coverage, but they do provide aid to those who are more sensitive to weight and in need of reduced weight options. **Note: Available in Standard sizes only. See pages 28–29 for more information on how this apron protects you (lead configuration).**



## APRON FEATURES

### Full Protection Apron

#### Adjustable Buckle Set

Adjustable buckle closures ensure a secure fit.

#### Extended Front Panels

Front panels are extended to 3/4 overlap coverage and when overlapped, achieve the desired LE protection.

#### Back Relief Belt

Wraps internally around your back and securely fastens in the front.

#### Shoulder Padding

Premium foam padding in the shoulders provides extra comfort.

#### Apron Pocket

#### Hook and loop Closure

#### Additional Customization Options

- Embroidery
- Logo
- Extra Pocket
- Apron Sleeve
- Axillary Wings

### Core Material Weight (0.50mm) Thickness Options

Core Material	Weight (0.50mm)	Thickness Options
Lead	6900 gsm	0.25, 0.50mm
T-Lite	6340 gsm	0.25, 0.35, 0.50mm
Prolite IEC	6000 gsm	0.25, 0.35, 0.50mm
Prolite	5700 gsm	0.25, 0.35, 0.50mm
Premier	5200 gsm	0.25, 0.35, 0.50mm

For more information on how this apron protects you (lead configuration), see pages 30–31.



For color options, see pages 34–43. Sizing info on pages 24–27.



\*CE applies to Lead, T-lite and Prolite IEC from 0.25mm to 1.00mm.

# BALANCE™ WRAPAROUND BACK RELIEF APRON



**MODEL:** [AP-WABR]

The Balance Wraparound Back Relief Apron's (aka "Wrap" or "Coat") standard overlapping panel design makes it easy to don with its premium lumbar support belt system. Your desired lead equivalence is applied to both panels which doubles the protection where they overlap and ensures no gaps in protection are present during community use. The versatile Balance Wrap is made with high quality buckle and hook and loop closures providing a secure and comfortable fit. **See pages 28-29 for more information on how this apron protects you (lead configuration).**



## APRON FEATURES

### Full Protection Apron

#### Adjustable Buckle Set

Adjustable buckle closures ensure a secure fit.

#### Standard Overlap Panels

Front panels are shorter. LE protection is doubled at overlap.

#### Back Relief Belt

Wraps internally around your back and securely fastens in the front.

#### Shoulder Padding

Premium foam padding in the shoulders provides extra comfort.

#### Apron Pocket

#### Hook and loop Closure

#### Additional Customization Options

- Embroidery
- Logo
- Extra Pocket
- Apron Sleeve
- Axillary Wings

### Core Material Weight (0.50mm) Thickness Options

Core Material	Weight (0.50mm)	Thickness Options
Pb Lead	6900 gsm	0.25, 0.50mm
T-Lite	6340 gsm	0.25, 0.35, 0.50mm
Prolite IEC	6000 gsm	0.25, 0.35, 0.50mm
Prolite	5700 gsm	0.25, 0.35, 0.50mm
Premier	5200 gsm	0.25, 0.35, 0.50mm
Nano	4600 gsm	0.35, 0.50mm

For more information on how this apron protects you (lead configuration), see pages 30-31.



For color options, see pages 34-43. Sizing info on pages 24-27.



\*CE applies to Lead, T-lite and Prolite IEC from 0.25mm to 1.00mm.

# FULL OVERLAP WRAPAROUND BACK RELIEF APRON



**MODEL:** [AP-WAFO]

The Full Overlap Wraparound Apron features two, fully extended overlapping front panels which achieve near seam-to-seam coverage; your desired lead equivalence is achieved where each panel overlaps the other with a minor 1 – 2 inch gap near the side seams. While not as easy to don, the Full Overlap Wrap provides visual clarity that you have near complete frontal coverage. Elimination of excess overlap results in a roughly 10% reduction in weight as compared to the standard overlap design. The versatile Full Overlap WrapAround Apron is made with high quality buckle and hook and loop closures providing a secure and comfortable fit. **See pages 28-29 for more information on how this apron protects you (lead configuration).**



## APRON FEATURES

### Full Protection Apron

#### Adjustable Buckle Set

Adjustable buckle closures ensure a secure fit.

#### Extended Front Panels

Front panels are extended for almost seam-to-seam coverage

#### Back Relief Belt

Wraps internally around your back and securely fastens in the front.

#### Shoulder Padding

Premium foam padding in the shoulders provides extra comfort.

#### Apron Pocket

#### Hook and loop + Buckle Closures

#### Additional Customization Options

- Embroidery
- Logo
- Extra Pocket
- Apron Sleeve
- Axillary Wings

### Core Material Weight (0.50mm) Thickness Options

Core Material	Weight (0.50mm)	Thickness Options
Lead	6900 gsm	0.25, 0.50mm
T-Lite	6340 gsm	0.25, 0.35, 0.50mm
Prolite IEC	6000 gsm	0.25, 0.35, 0.50mm
Prolite	5700 gsm	0.25, 0.35, 0.50mm
Premier	5200 gsm	0.25, 0.35, 0.50mm
Nano	4600 gsm	0.35, 0.50mm

For more information on how this apron protects you (lead configuration), see pages 30-31.



For color options, see pages 34-43. Sizing info on pages 24-27.



\*CE applies to Lead, T-lite and Prolite IEC from 0.25mm to 1.00mm.

# MATERNITY APRON

**MODEL:** [AP-MA]

The Maternity Apron is our heavy-duty, complete protection solution for expecting mothers who are undergoing or performing in diagnostic imaging. A large back and front panel are secured via crisscrossing tie straps which enables easy adjustability throughout the pregnancy. Maximum protection is provided in each panel and an additional half apron is included to provide additional protection in the abdominal region.



## APRON FEATURES

### Full Protection Apron

#### Complete Coverage

The front & back panels ensure you are fully protected from beginning to end of your pregnancy.

#### Half Apron Included

A Half apron is included for additional protection as you progress through your pregnancy.

#### Shoulder Tab Closure

Hook and loop shoulder tab ensures easy donning.

#### Shoulder Padding





Premium foam padding in the shoulders provides extra comfort.

#### Apron Pocket

#### Tie Closures

#### Additional Customization Options

- Sewn-in Thyroid
- Embroidery
- Logo
- Extra Pocket
- Apron Sleeve
- Axillary Wings

Core Material	Weight (0.50mm)	Thickness Options
 T-Lite	6340 gsm	0.25, 0.35, 0.50mm
 Prolite IEC	6000 gsm	0.25, 0.35, 0.50mm
 Prolite	5700 gsm	0.25, 0.35, 0.50mm
 Premier	5200 gsm	0.25, 0.35, 0.50mm

For more information on how this apron protects you (lead configuration), see pages 30-31.



For color options, see pages 34-43. Sizing info on pages 24-27.



\*CE applies to Lead, T-lite and Prolite IEC from 0.25mm to 1.00mm.

# WRAPAROUND FLEXBACK MATERNITY APRON

**MODEL:** [AP-MAWA]

The Wraparound Flexback Maternity Apron was born from our Wrap-Around Flexback design and incorporates our highly popular Flexback elastic-back technology with the versatility and comfort of our tri-tab closure system. A single front panel design eliminates excess overlap and reduces weight by up to 10% compared to traditional wrap styles. The Wrap-Around Flexback Maternity Apron distinguishes itself by delivering a lightweight fit and premium ergonomics all while maintaining optimal protection.



## APRON FEATURES

### Full Protection Apron

#### Elastic Back

Provides enhanced adjustability and lumbar support. Shifts weight from the shoulders to the hips.

#### Single Front Panel

Eliminates excess overlapping panels achieving a 10% weight reduction (compared to other wraparound and VS models).

#### Tri-tab Closure

Ensures a proper fit and easy donning.

#### Shoulder Padding

Premium foam padding in the shoulders provides extra comfort.





#### Apron Pocket

#### Hook and loop Closure

#### Additional Customization Options

- Sewn-in Thyroid
- Embroidery
- Logo
- Extra Pocket
- Apron Sleeve
- Axillary Wings

### Core Material Weight (0.50mm) Thickness Options

Core Material	Weight (0.50mm)	Thickness Options
 T-Lite	6340 gsm	0.25, 0.35, 0.50mm
 Prolite IEC	6000 gsm	0.25, 0.35, 0.50mm
 Prolite	5700 gsm	0.25, 0.35, 0.50mm
 Premier	5200 gsm	0.25, 0.35, 0.50mm

For more information on how this apron protects you (lead configuration), see pages 30-31.



For color options, see pages 34-43. Sizing info on pages 24-27.



\*CE applies to Lead, T-lite and Prolite IEC from 0.25mm to 1.00mm.

# WRAPAROUND FLEXBACK APRON

**MODEL:** [AP-WAFB]

The Wraparound Flexback design incorporates our highly popular Flexback elastic-back technology with the versatility and comfort of our tri-tab closure system. A single front panel design eliminates excess overlap and reduces weight by up to 10% compared to traditional wrap styles. The Wrap-Around Flexback distinguishes itself by delivering a lightweight fit and premium ergonomics all while maintaining optimal protection.



## APRON FEATURES

### Full Protection Apron

#### Elastic Back

Provides enhanced adjustability and lumbar support. Shifts weight from the shoulders to the hips.

#### Single Front Panel

Eliminates excess overlapping panels achieving a 10% weight reduction (compared to other wraparound and VS models).

#### Tri-tab Closure

Ensures a proper fit.

#### Shoulder Padding

Premium foam padding in the shoulders provides extra comfort.

#### Apron Pocket

#### Hook and loop Closure

#### Additional Customization Options

- Sewn-in Thyroid
- Embroidery
- Logo
- Extra Pocket

### Core Material Weight (0.50mm) Thickness Options

Core Material	Weight (0.50mm)	Thickness Options
Pb Lead	6900 gsm	0.25, 0.50mm
Pb T-Lite	6340 gsm	0.25, 0.35, 0.50mm
Prolite IEC	6000 gsm	0.25, 0.35, 0.50mm
Prolite	5700 gsm	0.25, 0.35, 0.50mm
Premier	5200 gsm	0.25, 0.35, 0.50mm
Nano	4600 gsm	0.35, 0.50mm

For more information on how this apron protects you (lead configuration), see pages 30-31.



For color options, see pages 34-43. Sizing info on pages 24-27.



\*CE applies to Lead, T-lite and Prolite IEC from 0.25mm to 1.00mm.

# FULL WRAP VEST AND SKIRT APRON



**MODEL:** [AP-VFW](vest only) [AP-SKIRT](skirt only)

The Full Wrap Vest provides seam to seam coverage of your chosen protection level with its large overlapping front panels. Specially placed hook and loop on the internal panels enables superior closure mobility and easy donning. The full frontal panel design optimizes for reduced weight and improved comfort.



## APRON FEATURES

### Full Protection Apron

#### IEC 60% Frontal Design

Compliant with IEC 60% frontal design requirement

#### Extended Front Panels

Front panels are extended for full seam-to-seam coverage

#### Shoulder Padding

Premium foam padding in the shoulders provides extra comfort.

#### Non-slip Backing

(On skirt interior) Reduces slippage and improves fit.

#### Apron Pocket

#### Hook and loop Closure

#### Hanging Tabs on Skirt

#### Additional Customization Options

- Embroidery
- Logo
- Extra Pocket
- Back Mesh
- Backstrap
- Apron Sleeve
- Axillary Wings
- Drop Shoulders

### Core Material Weight (0.50mm) Thickness Options

Core Material	Weight (0.50mm)	Thickness Options
Lead	6900 gsm	0.25, 0.50mm
T-Lite	6340 gsm	0.25, 0.35, 0.50mm
Prolite IEC	6000 gsm	0.25, 0.35, 0.50mm
Prolite	5700 gsm	0.25, 0.35, 0.50mm
Premier	5200 gsm	0.25, 0.35, 0.50mm
Nano	4600 gsm	0.35, 0.50mm

For more information on how this apron protects you (lead configuration), see pages 30-31.



For color options, see pages 34-43. Sizing info on pages 24-27.



\*CE applies to Lead, T-lite and Prolite IEC from 0.25mm to 1.00mm.

# VERSA WRAP APRON

**MODEL:** [AP-VW]

The Versa Wrap features two separate front and back panels which are buckled together to provide optimal front, back, and lateral protection. The high-quality buckle closure system promotes convenient adjustability for a comfortable fit. Two Surgical Drop shoulder buckles enable easy on/easy off versatility while maintaining sterile field.

**IEC 60% Frontal Overlap:** the IEC design parameters require that the greater protection of the frontal area should extend past the normal evenly split side seam into the back area by an additional 10%. Resulting in a front area to back ratio of 60% to 40%.



## APRON FEATURES

### Full Protection Apron

#### IEC 60% Frontal Design

Compliant with IEC 60% frontal design requirement

#### Surgical Drop Design

Multi-Buckle Closures enables easy on/off mechanics during procedures to maintain sterile field

#### Shoulder Padding

Premium foam padding in the shoulders provides extra comfort.

#### Apron Pocket

#### Buckle Closure

#### Additional Customization Options

- Sewn-in Thyroid
- Embroidery
- Logo
- Extra Pocket

### Core Material      Weight (0.50mm)      Thickness Options

Core Material	Weight (0.50mm)	Thickness Options
Lead	6900 gsm	0.25, 0.50mm
T-Lite	6340 gsm	0.25, 0.35, 0.50mm
Prolite IEC	6000 gsm	0.25, 0.35, 0.50mm
Prolite	5700 gsm	0.25, 0.35, 0.50mm
Premier	5200 gsm	0.25, 0.35, 0.50mm
Nano	4600 gsm	0.35, 0.50mm

For more information on how this apron protects you (lead configuration), see pages 30-31.



For color options, see pages 34-43. Sizing info on pages 24-27.



\*CE applies to Lead, T-lite and Prolite IEC from 0.25mm to 1.00mm.

# EZ VEST APRON

**MODEL:** [AP-VEZ]

A more efficient and ergonomic vest design providing EZ comfort! The EZ Vest features a single front panel and dual back panels with large, criss-crossing, elastic strap closure tabs. The shortened back panels enable better closure maneuverability and wearability while the larger elastic straps promote a secure fit and reduce back and shoulder fatigue.



## APRON FEATURES

### Full Protection Apron

#### IEC 60% Frontal Design

Compliant with IEC 60% frontal design requirement

#### Elastic Straps for Support

Provides enhanced adjustability and lumbar support.

#### Single Front Panel

Eliminates excess overlapping panels achieving a 10% weight reduction (compared to other wraparound and VS models).

#### Shoulder Padding

Premium foam padding in the shoulders provides extra comfort.

#### Apron Pocket

#### Hook and loop Closure

#### Additional Customization Options

- Sewn-in Thyroid
- Embroidery
- Logo
- Extra Pocket
- Apron Sleeve
- Axillary Wings
- Drop Shoulders

Core Material	Weight (0.50mm)	Thickness Options
Lead	6900 gsm	0.25, 0.50mm
T-Lite	6340 gsm	0.25, 0.35, 0.50mm
Prolite IEC	6000 gsm	0.25, 0.35, 0.50mm
Prolite	5700 gsm	0.25, 0.35, 0.50mm
Premier	5200 gsm	0.25, 0.35, 0.50mm
Nano	4600 gsm	0.35, 0.50mm

For more information on how this apron protects you (lead configuration), see pages 30-31.



For color options, see pages 34-43. Sizing info on pages 24-27.



\*CE applies to Lead, T-lite and Prolite IEC from 0.25mm to 1.00mm.

# EZ SKIRT APRON

**MODEL:** [AP-SKEZ]

The EZ Skirt features a built-in elastic belt which provides EZ security and comfort! Made with a single back panel and 2 wider front panels, the EZ skirt's ergonomic design maximizes wearability and protection. Anti-slip fabric is included on the built-in elastic belt.



## APRON FEATURES

### Full Protection Apron

#### IEC 60% Frontal Design

Compliant with IEC 60% frontal design requirement

#### Integrated Elastic Belt

Provides enhanced adjustability and lumbar support. EZ belt system makes skirt easy to don.

#### Contoured Back Panel

Curved skirt panel allows for easier movement.

#### Non-slip Backing

Reduces slippage and improves fit.

#### Hanging Tabs

#### Hook and loop + Belt Closure

#### Additional Customization Options

- Embroidery
- Logo
- Skirt Pocket
- Suspenders

Core Material	Weight (0.50mm)	Thickness Options
Lead	6900 gsm	0.25, 0.50mm
T-Lite	6340 gsm	0.25, 0.35, 0.50mm
Prolite IEC	6000 gsm	0.25, 0.35, 0.50mm
Prolite	5700 gsm	0.25, 0.35, 0.50mm
Premier	5200 gsm	0.25, 0.35, 0.50mm
Nano	4600 gsm	0.35, 0.50mm

For more information on how this apron protects you (lead configuration), see pages 30-31.



For color options, see pages 34-43. Sizing info on pages 24-27.



\*CE applies to Lead, T-lite and Prolite IEC from 0.25mm to 1.00mm.

# SKIRT APRON

**MODEL:** [AP-SKIRT]

Made with a single back panel and 2 streamlined front panels, the skirt apron's ergonomic design maximizes wearability and protection. Additional enhancements include adjustable buckle sets, and an anti-slip fabric tastefully integrated on the inner panels.



## APRON FEATURES

### Full Protection Apron

**Non-slip Backing**

Reduces slippage and improves fit.

**Hanging Tabs**

**Hook and loop + Buckle Closure**

**Additional Customization Options**

- Embroidery
- Logo
- Skirt Pocket
- Suspenders

Core Material	Weight (0.50mm)	Thickness Options
Lead	6900 gsm	0.25, 0.50mm
T-Lite	6340 gsm	0.25, 0.35, 0.50mm
Prolite IEC	6000 gsm	0.25, 0.35, 0.50mm
Prolite	5700 gsm	0.25, 0.35, 0.50mm
Premier	5200 gsm	0.25, 0.35, 0.50mm
Nano	4600 gsm	0.35, 0.50mm

For more information on how this apron protects you (lead configuration), see pages 30-31.



For color options, see pages 34-43. Sizing info on pages 24-27.



\*CE applies to Lead, T-lite and Prolite IEC from 0.25mm to 1.00mm.

## DENTAL PANORAMIC PONCHO



<b>MODEL</b>	AP-DP
<b>CORE MATERIALS</b>	All Core Types (see page 30)
<b>THICKNESS</b>	0.50, 0.35, 0.25mm (standard) LE
<b>CLOSURE</b>	Hook and loop
<b>SIZING</b>	Adult: 24" W x 27" L (front) 16" L (back) Pediatric: 18"W x 22"L (front) 12"L (back)
<b>CUSTOMIZATIONS</b>	Embroidery and Logo
<b>ADD-ONS</b>	Thyroid Collar
<b>COLORS</b>	See fabric colors on pages 27-37
<b>CE</b>	Yes

Drapes over the body to provide front and back protection during dental imaging. The Panoramic Poncho is secured via hook and loop closure on the back panels. It comes in an Adult and Child size and is available in select core materials and protection options: Ecolite 0.50 and 0.30mm LE, Prolite IEC 0.30mm LE, and Standard Lead 0.50 and 0.25mm Pb.



## DENTAL APRON



<b>MODEL</b>	AP-DAC / AP-DA
<b>CORE MATERIALS</b>	Lead - 0.30mm
<b>AND THICKNESSES</b>	T-lite - 0.30mm Prolite Bilayer IEC - 0.30mm
<b>CLOSURE</b>	None
<b>SIZING</b>	Adult: 28" W x 23.5" L (from neckline) Pediatric: 23.5" W x 18" L (from neckline)
<b>CUSTOMIZATIONS</b>	Embroidery and Logo
<b>ADD-ONS</b>	Anti-slip fabric
<b>COLORS</b>	See fabric colors on pages 27-37
<b>CE</b>	Yes

The Dental apron drapes over the body to provide front protection during dental procedures and x-rays. It comes with large hanging straps for easy storage and is available with attached hook and loop thyroid collar (AP-DAC) or without thyroid collar (AP-DA).



# APRON

# ACCESSORIES

Protech apron accessories are designed to provide added radiation protection for areas that may require coverage beyond the apron itself. By helping reduce exposure to scatter radiation, these accessories can play an important role in supporting both short-term safety and long-term occupational wellness.

A more complete protection strategy helps safeguard the wearer while reinforcing a culture of safety throughout the workplace. With the right protective gear in place, healthcare professionals can perform their duties with greater confidence while helping maintain a safer environment for staff and patients alike.



# chestmate

## TARGETED AXILLARY PROTECTION

The Chestmate delivers targeted supplemental protection for the axilla region in a lightweight, low-profile design that doesn't compromise mobility. Made with a soft, cooling fabric and worn underneath the apron, the Chestmate features two removable wing panels that can be positioned to achieve a more personalized fit across a wide range of body shapes.

Guideline stitching along the hook-and-loop attachment points promotes consistent panel placement, while the front closure provides a secure, adjustable fit. Designed for comfort, flexibility, and added peace of mind, Chestmate helps extend protection where it matters most.

- ▶ Targeted axillary protection
- ▶ Adjustable and flexible design for customized fit
- ▶ Cooling Inner Fabric
- ▶ Worn underneath your existing apron
- ▶ Allows for full range of motion
- ▶ Consistent 0.50mm protection



<b>MODEL</b>	AP-MATE
<b>CORE MATERIALS</b>	T-Lite, Premier, Nano
<b>THICKNESS</b>	0.50mm LE (@ overlap) 0.25mm LE in each wing panel
<b>CLOSURE</b>	Hook and loop
<b>SIZING (Chest)</b>	XS-SM: 36-38" MD-LG: 39-43" XL: 44-48"
<b>CE</b>	Yes



# SEWN-IN THYROID COLLARS



<b>MODEL</b>	AP-TCH   AP-TCF
<b>CORE MATERIALS</b>	All Core Types (see page 30)
<b>THICKNESS</b>	0.50mm LE
<b>CLOSURE (HALF)</b>	None
<b>CLOSURE (FULL)</b>	Hook and loop, Magnetic or Buckle
<b>CUSTOMIZATIONS</b>	Embroidery and Logo
<b>COLORS</b>	See fabric colors on pages 27-37
<b>CE</b>	Yes

Sewn-in thyroid collars are a streamlined alternative to traditional, separate collars eliminating the risk of loss or misplacement while reducing bulkiness. The half sewn-in collar is angled slightly away from the neck to promote airflow and all-day comfort, while the full sewn-in collar features a back closure for a more secure fit. Both sewn-in thyroid collar styles are integrated directly into the apron for improved ergonomics and a more consistent, reliable fit.



Half Sewn-in  
Thyroid Collar  
(AP-TCH)



Full Sewn-in  
Thyroid Collar  
(AP-TCF)

## STANDARD THYROID COLLAR



<b>MODEL</b>	AP-TCS
<b>CORE MATERIALS</b>	All Core Types (see page 30)
<b>THICKNESS</b>	0.50 (standard), 0.35, 0.25mm LE
<b>CLOSURE</b>	Hook and loop, Magnets or Buckle
<b>SIZING</b>	Small: 13-14" (neck circ.) Medium: 15-16" (neck circ.) Large: 17"+ (neck circ.) X-Large: Custom
<b>CUSTOMIZATIONS</b>	Embroidery and Logo
<b>ATTACHMENTS</b>	Loose, Clip, Keyring, Tethered
<b>COLORS</b>	See fabric colors on pages 27-37
<b>CE</b>	Yes

The standard radiation thyroid collar is designed to fit higher along the neck while providing complete coverage of the thyroid against x-ray radiation.



## ORIGINAL THYROID COLLAR



<b>MODEL</b>	AP-TCO
<b>CORE MATERIALS</b>	All Core Types (see page 30)
<b>THICKNESS</b>	0.50 (standard), 0.35, 0.25mm LE
<b>CLOSURE</b>	Hook and loop, Magnets or Buckle
<b>SIZING</b>	Small: 13-14" (neck circ.) Medium: 15-16" (neck circ.) Large: 17"+ (neck circ.) X-Large: Custom (neck circ.)
<b>CUSTOMIZATIONS</b>	Embroidery and Logo
<b>ATTACHMENTS</b>	Loose, Clip, Keyring, Tethered
<b>COLORS</b>	See fabric colors on pages 27-37
<b>CE</b>	Yes

The original style thyroid collar fits lower on the neck, offering coverage of the thyroid against scatter radiation. Hook and loop strips on the end allow for neck size adjustability. This streamlined style is our most popular.



## VISOR THYROID COLLAR



<b>MODEL</b>	AP-TCV-RG (reg.)   AP-TCV-LG (large)
<b>CORE MATERIALS</b>	All Core Types (see page 30)
<b>THICKNESS</b>	0.50 (standard), 0.35, 0.25mm LE
<b>CLOSURE</b>	Hook and loop (shown) or Magnets
<b>SIZING</b>	Regular: 25" (neck circ.) Large: 27" (neck circ.)
<b>CUSTOMIZATIONS</b>	Embroidery and Logo
<b>ATTACHMENTS</b>	Loose, Clip, Keyring, Tethered
<b>COLORS</b>	See fabric colors on pages 27-37
<b>CE</b>	Yes

Ergonomically designed for a snug fit, the Visor thyroid is optimized for comfort and maximum protection. The neck piece provides additional front and lateral protection.



## BIB THYROID COLLAR



<b>MODEL</b>	AP-TCB (reg.) / AP-TCBL (oversized)
<b>CORE MATERIALS</b>	All Core Types (see page 30)
<b>THICKNESS</b>	0.50 (standard), 0.35, 0.25mm LE
<b>CLOSURE</b>	Hook and loop (shown) or Magnets
<b>SIZING</b>	One size fits all
<b>DIMENSIONS</b>	Regular - 24" L x 7.5" H (4.5" bib) Oversized - 24" L x 9" H (6" Bib)
<b>CUSTOMIZATIONS</b>	Embroidery and Logo
<b>ATTACHMENTS</b>	Loose, Clip, Keyring, Tethered
<b>COLORS</b>	See fabric colors on pages 27-37
<b>CE</b>	Yes

The Bib thyroid's streamlined design provides a comfortable fit as well as complete coverage to the neck area. For those wanting a little extra coverage, we also offer an oversized Bib option (6" in length).



## MAMMOGRAPHY THYROID COLLAR



<b>MODEL</b>	AP-TCM
<b>CORE MATERIALS</b>	All Core Types (see page 30)
<b>THICKNESS</b>	0.50 (standard), 0.35, 0.25mm LE
<b>CLOSURE</b>	Hook and loop (shown) or Buckle
<b>SIZING</b>	One Size: 29" L, 4" Bib
<b>CUSTOMIZATIONS</b>	Embroidery and Logo
<b>ATTACHMENTS</b>	Loose, Clip, Keyring, Tethered
<b>COLORS</b>	See fabric colors on pages 27-37
<b>CE</b>	Yes

Don't let the standard or original thyroid collar get all the attention. The mammography's sleek profile provides a detachable alternative to "sewn-in" thyroid collars while allowing for adjustability. Additionally, the mammography thyroid collar serves as a valuable option for patient protection.



## PROGUARD THYROID COLLAR



<b>MODEL</b>	AP-TCG
<b>CORE MATERIALS</b>	All Core Types (see page 30)
<b>THICKNESS</b>	0.50 (standard), 0.35, 0.25mm LE
<b>CLOSURE</b>	Hook and loop
<b>SIZING</b>	Small: 21" (neck circ.) Medium: 22" (neck circ.) Large: 23" (neck circ.) X-Large: 24" (neck circ.)
<b>CUSTOMIZATIONS</b>	Embroidery and Logo
<b>ATTACHMENTS</b>	Loose, Clip, Keyring, Tethered
<b>COLORS</b>	See fabric colors on pages 27-37
<b>CE</b>	Yes

Featuring a form-fitting design and hook and loop closure, the Proguard thyroid collar provides comprehensive front and back protection.



## PROGUARD SMART CAP



<b>MODEL</b>	AP-PGCAP
<b>CORE MATERIALS</b>	All Core Types (see page 30)
<b>THICKNESS</b>	0.50 (standard), 0.35, 0.25mm LE
<b>CLOSURE</b>	Beaded Adjustable Strap
<b>SIZING</b>	SM-M: 21-22" (head circ.) L-XL: 23-25" (head circ.)
<b>CUSTOMIZATIONS</b>	Embroidery and Logo
<b>PROTECTION</b>	Side Protection
<b>COLORS</b>	See fabric colors on pages 27-37
<b>CE</b>	Yes

Need head protection that is breathable, light-weight, and comfortable? The Proguard Smart Cap features breathable CoolGuard spandex fabric on the top while providing protection around the sides of your head.



## PAGE CAP



<b>MODEL</b>	AP-PCAP
<b>CORE MATERIALS</b>	All Core Types (see page 30)
<b>THICKNESS</b>	0.50 (standard), 0.35, 0.25mm LE
<b>CLOSURE</b>	Hook and loop
<b>SIZING</b>	Small: 21" (head circ.) Medium: 22" (head circ.) Large: 23" (head circ.) X-Large: 24" (head circ.)
<b>CUSTOMIZATIONS</b>	Embroidery and Logo
<b>PROTECTION</b>	Side Protection
<b>COLORS</b>	See fabric colors on pages 27-37
<b>CE</b>	Yes

The Page Cap is designed to provide protection around the sides of your head, while the top contains no lead. Alternatively, similar to a scrub cap, the Head Cap provides x-ray protection around the entire head. Hook and loop tab closures allow for an adjustable fit on both styles. \*Sizes based on head circumference.



## HEAD CAP



<b>MODEL</b>	AP-CAP
<b>CORE MATERIALS</b>	All Core Types (see page 30)
<b>THICKNESS</b>	0.50 (standard), 0.35, 0.25mm LE
<b>CLOSURE</b>	Hook and loop
<b>SIZING</b>	Small: 21" (head circ.) Medium: 22" (head circ.) Large: 23" (head circ.) X-Large: 24" (head circ.)
<b>CUSTOMIZATIONS</b>	None
<b>PROTECTION</b>	Top and Side Protection
<b>COLORS</b>	See fabric colors on pages 27-37
<b>CE</b>	Yes

Similar to a scrub cap, the Head Cap provides x-ray protection around the entire head. Hook and loop tab closures allow for an adjustable fit on both styles.  
\*Sizes based on head circumference.



## SCOLIOSIS STOLE



<b>MODEL</b>	AP-STOLE
<b>CORE MATERIALS</b>	All Core Types (see page 30)
<b>THICKNESS</b>	0.50 (standard), 0.35, 0.25mm LE
<b>CLOSURE</b>	Buckle
<b>SIZING</b>	Pediatric: 15" x 4.75" Medium: 18.5" x 6.75" Large: 23.5" x 8"
<b>CUSTOMIZATIONS</b>	Embroidery and Logo
<b>COLORS</b>	See fabric colors on pages 27-37
<b>CE</b>	Yes

The scoliosis stole is primarily used for spinal imaging. The shield features hook and loop panels and an adjustable belt for proper positioning. The neck area does not contain lead, allowing complete visibility of the spine during x-ray, while offering protection to the breast area. This shield is great for scoliosis studies.



## GONAD/OVARIAN SHIELD



<b>MODEL</b>	AP-GONAD/GONAD-SET
<b>CORE MATERIALS</b>	All Core Types (see page 30)
<b>THICKNESS</b>	0.50 (standard), 0.35, 0.25mm LE
<b>CLOSURE</b>	Hook and loop (standard) or Buckle
<b>SIZING</b>	Small - 5.75" x 4.5" Medium - 7.6" x 6.4" Large - 9.5" x 7.8" Pediatric sizing available
<b>CUSTOMIZATIONS</b>	Embroidery and Logo
<b>SPECIAL</b>	Available as a set of 3 or individually
<b>COLORS</b>	See fabric colors on pages 27-37
<b>CE</b>	Yes

The gonad shield provides essential protection to radiosensitive reproductive organs. Secured via a hook and loop or buckle closure system, the Gonad shield is sold in 5 individual sizes or as a set of 3.



## SHIN GUARDS & FOOT COVERS



<b>MODEL</b>	AP-SHIN   AP-FOOT
<b>CORE MATERIALS</b>	All Core Types (see page 30)
<b>THICKNESS</b>	0.50 (standard), 0.35, 0.25mm LE
<b>CLOSURE</b>	Velcro
<b>SIZING</b>	SM: 13" x 9" M: 14" x 10" L: 16" x 12" XL: 18" x 24"
<b>CUSTOMIZATIONS</b>	Embroidery and Logo
<b>COLORS</b>	See fabric colors on pages 27-37
<b>CE</b>	Yes

When being exposed to ionizing radiation, all forms of radiation protection are necessary. Shin Guards provide essential protection to extremities which may not be covered from scatter radiation; especially if no table drapes are present. Optional foot covers may be added (AP-FOOT) for complete protection.



(AP-FOOT)

## APRON SLEEVE



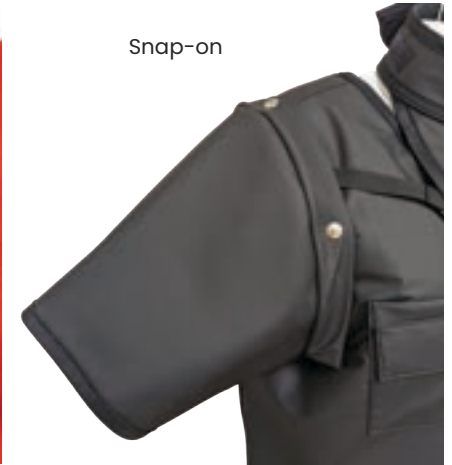
<b>MODEL</b>	AP-SLV (sewn-in) / SLV2 (snap-on)
<b>CORE MATERIALS</b>	All Core Types (see page 30)
<b>THICKNESS</b>	0.50, 0.35, 0.25mm (standard) LE
<b>CLOSURE</b>	Snap-on or Sewn-in
<b>SIZING (FEMALE)</b>	Small, Medium, Large, XL, 2XL
<b>SIZING (MALE)</b>	Small, Medium, Large, XL, 2XL
	Length (reg.): 11"   Length (short): 8.5"
	Circumference: see size charts
<b>CUSTOMIZATIONS</b>	Embroidery and Logo
<b>COLORS</b>	See fabric colors on pages 27-37
<b>CE</b>	Yes

This optional sleeve is available for many apron styles and protects the upper arm and shoulder from direct beam and scatter radiation. It can be attached as a snap-on or directly sewn-on. Please note that the apron sleeve is not fully attached at the armpit. An optional flap is available for additional protection/coverage (see customizations page for more info). Price is per (1) sleeve.

Sewn-in



Snap-on



## HALF APRON



<b>MODEL</b>	AP-HA
<b>CORE MATERIALS</b>	All Core Types (see page 30)
<b>THICKNESS</b>	0.50 (standard), 0.35, 0.25mm LE
<b>CLOSURE</b>	Hook and loop
<b>SIZING</b>	SM (pediatric): 10" x 10"
	MD: 18" x 16"
	LG: 24" x 20"
	XL: 24" x 24"
<b>CUSTOMIZATIONS</b>	Embroidery and Logo
<b>COLORS</b>	See fabric colors on pages 27-37

The half apron can provide extra radiation protection. Selling it separate also allows you to mix and match a smaller bottom half with a larger top piece or vice versa.



## CORSET BELT

MODEL	AP-CORSET
PROTECTION	None
SIZING (FEMALE)	Small - 4XL (Use apron waist measurement)
SIZING (MALE)	XS - XL (Use apron waist measurement)
COLORS	Black

Our corset belt is a great apron accessory for added back support when wearing a radiation protective apron. The finger pull tab and pulley system along the spine provides for simple adjustment and even tension.

**\*The corset belt is worn under the apron.**  
**\*\*Use apron waist measurements on page 59 to determine your size.**



## BACK RELIEF BELT

MODEL	AP-BLT
PROTECTION	None
CLOSURE	Buckle
SIZING (FEMALE)	XS: 24-26"   S: 26-28" M: 28-31"   L: 31-33" XL: 34-38"
SIZING (MALE)	XS: 30-33"   S: 33-36" M: 37-40"   L: 41-44" XL: 44-48"
CUSTOMIZATIONS	None
COLORS	See fabric colors on pages 27-37

The back relief belt is constructed of neoprene bonded elastic. It features high quality components that do not lose elasticity. The belt also features a non-slip adjustable buckle to ensure a secure fit. The back relief belt attaches separately from the apron.



## APRON SUSPENDERS

<b>MODEL</b>	AP-SUSP2
<b>CORE MATERIALS</b>	None
<b>MATERIAL</b>	Black Nylon
<b>SIZING</b>	One size fits all

Need a little extra help holding up your skirt? Try our apron suspenders to keep that apron skirt right where you want it.



## THYROID COLLAR COVERS

<b>MODEL</b>	SG-TCCD
<b>CORE MATERIALS</b>	None
<b>MATERIAL</b>	Blue SMS
<b>SIZING</b>	One size fits all
<b>FEATURES</b>	Disposable
<b>UOM QTY</b>	50 per box

Our disposable thyroid collar covers do not provide protection against x-ray, but are a useful way to encourage the use of thyroid collars by keeping them clean. The thyroid collar covers fit a wide variety of thyroid collar styles, will prevent damage from make-up and prevent the build-up of filth. Extend the life of your thyroid collars by covering them with ScatterGuard's hygienic, disposable thyroid collar cover.



## DISPOSABLE SMART CAP



<b>MODEL</b>	SG-DCAP
<b>CORE MATERIALS</b>	Prolite
<b>THICKNESS</b>	0.60, 0.125, 0.25*, or 0.50mm LE
<b>CLOSURE</b>	Ties
<b>SIZING</b>	Small - 21" (head circ.) Medium - 22" (head circ.) Large - 23" (head circ.)
<b>CUSTOMIZATIONS</b>	None
<b>FABRIC</b>	Blue SMS
<b>CE</b>	Yes* (only 0.25mm LE)

ScatterGuard's disposable Smart Caps are designed to provide essential protection against scatter radiation. Smart Caps feature a cotton inner-liner to absorb perspiration and ensure a comfortable fit. Light-weight and adjustable, our Smart Cap is available in 3 sizes. The Cap is made with a premium lead-free material and may be disposed of through normal waste procedures. The disposable Smart Cap blocks up to 95% of radiation.



## DISPOSABLE THYROID COLLAR



<b>MODEL</b>	SG-DTHY
<b>CORE MATERIALS</b>	Prolite
<b>THICKNESS</b>	0.125, 0.25*, or 0.50mm LE
<b>CLOSURE</b>	Hook and loop
<b>SIZING</b>	Regular: 13-16" (neck circ.) Large: 17-20" (neck circ.)
<b>CUSTOMIZATIONS</b>	None
<b>FABRIC</b>	Blue SMS
<b>CE</b>	Yes* (only 0.25mm LE)

ScatterGuard's disposable Thyroid Collars are designed to provide essential protection against scatter radiation. Light-weight and available in 2 sizes, our disposable thyroid collar is made with a premium lead-free material and may be disposed of through normal waste procedures. The disposable Thyroid Collar blocks up to 95% of radiation.





# PEDIATRIC PROTECTION

Pediatric protection in the radiation safety industry is crucial due to the heightened sensitivity of children's developing bodies to ionizing radiation. Their smaller size means that even low doses of radiation can have more significant effects, making the implementation of robust protective measures essential.

By tailoring radiation safety apparel specifically for children, our pediatric products offer optimal protection and ensure the lowest radiation dose possible.

## PEDIATRIC TIE APRON



<b>MODEL</b>	AP-TA-CH
<b>CORE MATERIALS</b>	All Core Types (see page 30)
<b>THICKNESS</b>	0.50 (standard), 0.35, 0.25mm LE
<b>CLOSURE</b>	Tie
<b>SIZING</b>	Small: 12 x 24" (Ages 1-3) Medium: 14 x 26" (Ages 4-6) Large: 16 x 28" (Ages 7-10)
<b>CUSTOMIZATIONS</b>	Embroidery and Logo
<b>COLORS</b>	See fabric colors on pages 27-37
<b>CE</b>	Yes

The Tie Apron is an easy-to-use, affordable option for x-ray protection. Utilizing a tie closure, the Tie Apron's criss crossing straps ensure a secure and comfortable fit. Premium foam padding in the shoulders provides extra comfort.



## PEDIATRIC VELCRO ADJUSTABLE APRON



<b>MODEL</b>	AP-VA-CH
<b>CORE MATERIALS</b>	All Core Types (see page 30)
<b>THICKNESS</b>	0.50 (standard), 0.35, 0.25mm LE
<b>CLOSURE</b>	Hook and loop
<b>SIZING</b>	Small: 12 x 24" (Ages 1-3) Medium: 14 x 26" (Ages 4-6) Large: 16 x 28" (Ages 7-10)
<b>CUSTOMIZATIONS</b>	Embroidery and Logo
<b>COLORS</b>	See fabric colors on pages 27-37
<b>CE</b>	Yes

The Velcro adjustable apron has crisscrossing back straps that provide back support while securing the apron around your waist. Wide back straps prevent the apron from slipping around your shoulder and back area.



## PEDIATRIC HALF APRON



<b>MODEL</b>	AP-HA-CH
<b>CORE MATERIALS</b>	All Core Types (see page 30)
<b>THICKNESS</b>	0.50 (standard), 0.35, 0.25mm LE
<b>CLOSURE</b>	Hook and loop
<b>SIZING</b>	Pediatric: 10" x 10"
<b>CUSTOMIZATIONS</b>	Embroidery and Logo
<b>COLORS</b>	See fabric colors on pages 27-37
<b>CE</b>	Yes

The half apron can provide extra radiation protection. Selling it separate also allows you to mix and match a smaller bottom half with a larger top piece or vice versa.



## PEDIATRIC DENTAL APRON



<b>MODEL</b>	AP-DA-CH / AP-DAC-CH
<b>CORE MATERIALS</b>	Lead - 0.25mm
<b>&amp; THICKNESS</b>	Prolite - 0.30mm
	Prolite Bilayer IEC - 0.30mm
<b>CLOSURE</b>	None
<b>SIZING</b>	Pediatric: 23.5" W x 18" L (from neckline)
<b>CUSTOMIZATIONS</b>	Embroidery and Logo
<b>ADD-ONS</b>	Anti-slip Fabric
<b>COLORS</b>	See fabric colors on pages 27-37
<b>CE</b>	Yes

The Dental apron provides optimal protection during dental procedures and x-rays. The dental apron comes with large hanging straps for easy storage and is available with attached hook and loop thyroid collar (AP-DAC) or without thyroid collar (AP-DA). Optional anti-slip interior fabric upgrade is also available.



## PEDIATRIC THYROID COLLAR



<b>MODEL</b>	AP-TCO-PD
<b>CORE MATERIALS</b>	All Core Types (see page 30)
<b>THICKNESS</b>	0.50 (standard), 0.35, 0.25mm LE
<b>CLOSURE</b>	Hook and loop
<b>SIZING</b>	Infant: Custom (Ages 0-1) Pediatric: 10" (Ages 2-8)
<b>CUSTOMIZATIONS</b>	Embroidery and Logo
<b>ATTACHMENTS</b>	Loose, Clip, Keyring, Tethered
<b>COLORS</b>	See fabric colors on pages 27-37
<b>CE</b>	Yes

Our Pediatric Thyroid collar is based on the original style and is designed to protect children ages 2 to 8 from harmful x-ray. For ages 9 and up, simply opt for a small thyroid collar (12" neck circumference).



## PEDIATRIC GONAD SHIELD SET



<b>MODEL</b>	AP-GONSET2
<b>CORE MATERIALS</b>	All Core Types (see page 30)
<b>THICKNESS</b>	0.50 (standard), 0.35, 0.25mm LE
<b>CLOSURE</b>	Velcro (standard) or Buckle
<b>SIZING</b>	1 Pediatric: 3.75" x 3.75" 1 Child: 5" x 4" 1 Small: 5.75" x 4.5"
<b>CUSTOMIZATIONS</b>	Embroidery and Logo
<b>COLORS</b>	See fabric colors on pages 27-37
<b>CE</b>	Yes

The pediatric gonad shield provides essential protection to radiosensitive reproductive organs. Secured via a hook and loop or buckle closure system, the Gonad shield is sold in 5 individual sizes or as a set of 3.



## PEDIATRIC SCOLIOSIS STOLE



MODEL	AP-STOLE-CH
CORE MATERIALS	All Core Types (see page 30)
THICKNESS	0.50 (standard), 0.35, 0.25mm LE
CLOSURE	Buckle
SIZING	Pediatric: 15" x 4.75"
CUSTOMIZATIONS	Embroidery and Logo
COLORS	See fabric colors on pages 27-37
CE	Yes

The scoliosis stole is primarily used for spinal imaging. The shield features hook and loop panels and an adjustable belt for proper positioning. The neck area does not contain lead, allowing complete visibility of the spine during x-ray, while offering protection to the breast area. This shield is great for scoliosis studies.



## TUGGA BABY



MODEL	RE-BABY
FRAME TYPE	Goggles
FRONT LENS	0.75mm Pb Glass
WEIGHT	42g
FRAME SIZE	46-18
MATERIAL	Polycarbonate
SIDE SHIELDS	N/A
RX OPTIONS	N/A
MIN PRG PD	N/A
CE	Yes
COLORS	Shiny Blue, Shiny Black

Protech's Tugga Baby pediatric glasses provide essential protection during medical fluoroscopy and feature a universal fit with its adjustable headband.

- Features:**
- **Adjustable headband for universal fit**



# APRON STORAGE

Protech's high quality garment storage devices are made in the USA from locally sourced raw materials. Each model is carefully designed to provide optimal storage utility and ease of use. We encourage you to properly store your garments in order to prolong their usable life and recommend our premium quality storage products to get the job done!

For best storage practices, please review our storage and care instructions which are found in the beginning of this catalog or review our recommendations below:

- **Store your garments on a hanger**
- **Avoid exposure to direct sunlight**
- **Avoid contact with sharp objects**
- **For transportation, garments should be rolled up, not folded**

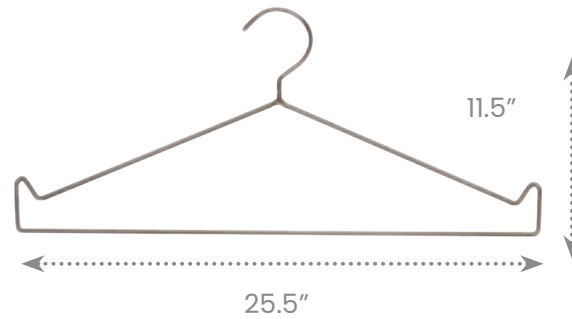


## APRON HANGER

MODEL: [ AS-HANG ]

CAPACITY: 40LBS

Constructed out of aluminum for durability and longevity this apron hanger is used for the storage of radiation protection aprons. It features hook style ends that are designed to hold lead skirts.



## APRON DUFFLE BAG

MODEL: [ AP-DUFFLE ]

CAPACITY: UP TO 2 APRONS

Our duffle bag protects your aprons while traveling between facilities or out of the country. Protect and store your aprons for transport now with our affordable, high quality duffle bag. Features: 10" Hook and loop Opening, Carrying Handle & Shoulder Strap.

**For all color options, refer to pages apron fabric color pages.**



## WIRE STORAGE LOCKER

MODEL: [ AS-WLOCK3624 ]

CAPACITY: UP TO 15 APRONS

The Wire Storage Locker allows you to keep your garments and other valuables secure with the option of easy transport throughout your facility. The locker features lockable doors (opens a full 270°), 2 Wire Shelves, and a hanging rod (not shown) to easily hang your radiation apparel. The locker is coated with a true powder-epoxy over zinc-chromate electroplating, ensuring a strong, durable finish with excellent handling of extreme temperatures and moisture. NEXGard®, an anti-microbial agent protects the epoxy coating from bacteria, mold, and mildew that causes odors and product degradation. Handles all environmental conditions. Some assembly required.

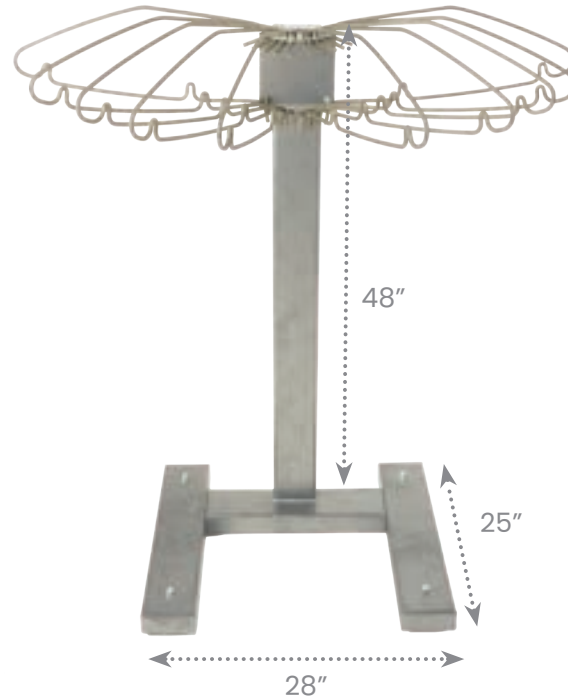


## MIGHTY MAX RACK

MODEL: [ AS-MAX-MOB ]

CAPACITY: 10 APRONS

The Mighty-Max mobile apron rack's solid steel design holds up to 10 aprons. The pedestal base has rolling wheels for easy portability. Convenience hooks on each hanger can hold lead skirts.

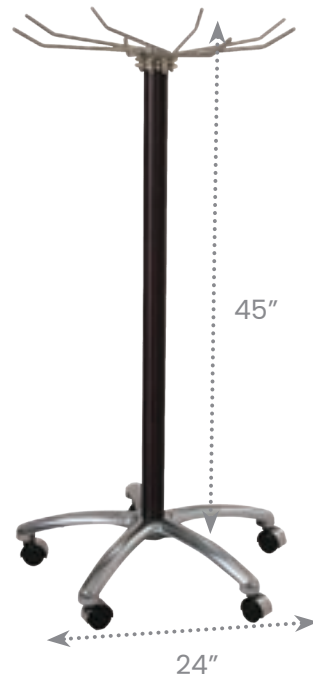


## PORTA RACK

MODEL: [ AS-PORTRK ]

CAPACITY: 8 APRONS

Ideal for use in the O.R., Specials, and Cath Labs, this portable apron storage unit is great quality and affordable. The 24" wheel base with double casters allows this completely loaded rack to glide smoothly while being moved. The porta rack features moving hanger arms that swing forward and backwards for easy apron selection.

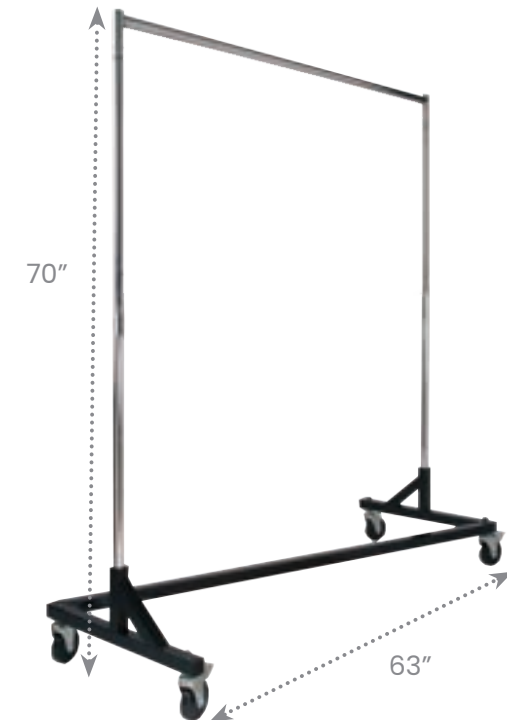


## Z-RACK

MODEL: [ AS-VALET3 ]

CAPACITY: UP TO 20 APRONS

Our Z-Rack is made with heavy duty construction and can hold up to 500 pounds. Large, swivel casters (2 with locking mechanisms) and convenient, nesting design make the Z-rack an excellent portable storage option. The rack provides storage capacity for up to 20 aprons!

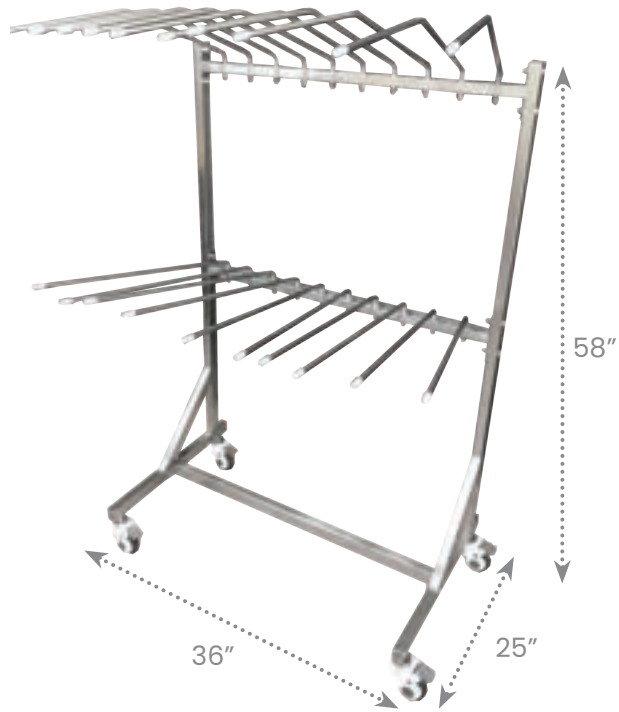


## 2-TIER VALET RACK

MODEL: [ AS-VALET2 ]

CAPACITY: UP TO 10 APRONS

Industrial quality steel construction and medical-grade casters makes the 2-tier apron racks an excellent portable storage option. The rack provides storage capacity for up to 10 aprons. \*Includes 4 screws for quick assembly



## VALET RACK

MODEL: [ AS-VALET ]

CAPACITY: UP TO 15 APRONS

Industrial quality steel construction and easy roll casters make these mobile apron racks an excellent portable storage option. The rack provides storage capacity for up to 15 aprons. \*Includes 4 screws for quick assembly



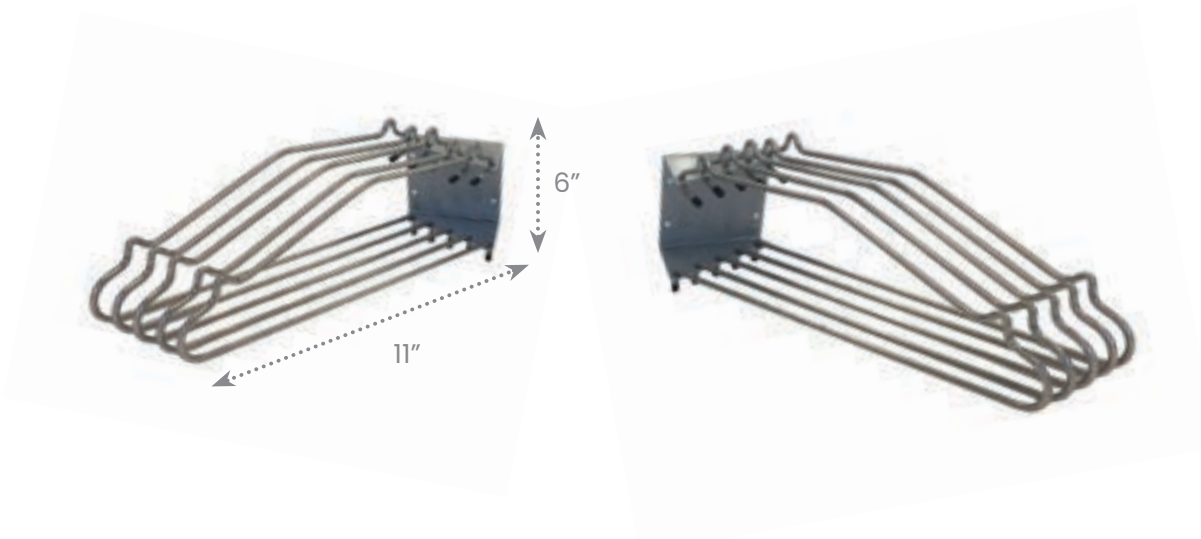
## WALL RACK

MODEL: [ AS-WALL-L/R ]

CAPACITY: 5 APRONS PER CONSOLE

Prolong the life of your radiation protective garment with our apron wall rack console. Each console holds up to 5 protective aprons with the combined left and right consoles storing up to 10 aprons. The wall console features hooks on the top of the hangers for lead skirts.

\*Does not include mounting hardware.



## PEG RACK

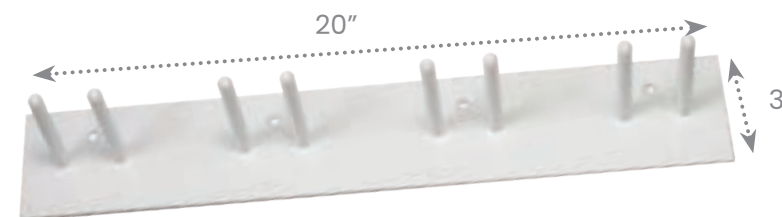
MODEL: [ AS-PEG ]

CAPACITY: 1-10 APRONS

The apron Peg rack is made of steel construction and easily screws into wall studs. It can store up to 10 aprons but comes in a variety of sizes that accommodate a range of lead aprons. This affordable wall storage for aprons is essential to prolong the life of your protective aprons. \*Mounting hardware is not included.

Example configuration shown: PEG-8

Model	# of Pegs	# of Aprons	Dimensions
PEG-2	2	1	5 x 3"
PEG-4	4	2	10 x 3"
PEG-6	6	3	15 x 3"
PEG-8	8	4	20 x 3"
PEG-10	10	5	25 x 3"
PEG-14	14	7	35 x 3"
PEG-18	18	9	45 x 3"
PEG-20	20	10	50 x 3"





## CONTACT US

Telephone: 561.627.9769

Email (USA): [sales@protechmed.com](mailto:sales@protechmed.com)

Email (Intl.): [global@protechmed.com](mailto:global@protechmed.com)

Email (Lat. Am.): [latam@protechmed.com](mailto:latam@protechmed.com)

[www.protechmed.com](http://www.protechmed.com)

Protech Medical

7960 Central Industrial Drive, Suite 125

West Palm Beach, FL 33404 USA